



Republic of Zambia

Ministry of Education

**LUVALE**

**EARLY CHILDHOOD EDUCATION (ECE 1)**

**VAMYAKA 3-4**

**MUKANDA WANANGWILO**

**THEMU 1**



Developed by the Curriculum Development Centre

Lusaka

© 2025

© Curriculum Development Centre

Mukanda uno kavawitavishile kuzachisa mujila yekha chakuzeneka lushimbi lwakufuma kuli venyawoko. Lusesa lwakuzachisa mukanda uno kuvanga lufume ku Curriculum Development Centre.

## **Vausonekele**

- Charles Zuze:*** Specialist - Curriculum Development  
Curriculum Development Centre – Lusaka, Zambia
- Bridget Ndumba:*** Lecturer- Solwezi College of Ed - Solwezi
- Chindumba Sakatengo:*** Teacher Indeco Primary School - Kabompo
- Chiteta Chitale:*** Teacher -Matondo primary School - Zambezi
- Felix Kaula:*** Teacher-Chivombo Primary School - Chavuma
- Lydia Nduwa:*** Teache- Chiyeke Primary School - Chavuma
- Liwate Mosted:*** Teacher- Lukolwe Primary School - Chavuma

## **KULUMBUNUNA**

Kwiza chakulinangula chachihya, echi chinalumuna vilongeselo vyakutanga chakalikilamu inemanyina hauhashi wakunangakana vyuma (competence based curriculum) chinanehe kwalumuka mukulinangula vyuma kuhichila mukuvinga kaha nachilingisa valongi kukwata chinyingi chamumyaka ino mukuzamikisa kupwa nachinyingi chakuzata milimo yakumavoko.

Uno mukanda wavilongeselo vyamwakunangwila vakashikola vamuuthumbo vanausoneka mujila yauhashi wakunangakana vyuma vyanangwilo najishimbi jakumona nge kulinangula chinalitoto nakayoyelo kavathu. Mauhashi akunangakana vyuma vanahake mukalikilamu ya 2023 osena analitasana navyuma vyanangwilo vanasoneka mumukanda uno

Mukanada unounemanyina hakukafwa milongeshi vanakunangula seteko yavalongi vashikola yamuuthumbo kuputuka kunangula vilongeselo vyakalikulumu inemanyina hakunangula valongi vyuma vatela kulinga (competence based curriculum) halwola kunahono mikanda vanetavila kuzachisa mumashikola. Echi chili nakusolola kufwila chamuthango wafulumende watala vyamashilo kumona ngana ngwavo milimo yamulongeshi vanayashiwisa. Hakulinga ngocho, milongeshi vatela kuzachisa chinyingi valinacho chakutanga nakuwana vyuma vikwavo navivakafwako mukunangula valongi mumaukalu vanahase kuwana mukunangula vilongeselo evi .

Ngunachifwelela ngwami milongeshi navazachisa mukanda ou mujila yakwoloka.

Joel Kamoko (Mr.)

Permanent Secretary- Educational Services

MINISTRY OF EDUCATION

## **KUSAKWILILA**

Mukanda uno wavilongeselo vyakutanga mu Luvale vyakunangula valongi vamuuthumbo vaseteko 1 (vamyaka 3-4) vaulongesele kuhichila mukuhulyojola vathu vavavulu nakuhomesa vathu hamwe. Vathu vavavulu hamwe kaha nanauka avathu akulisezaseza vavahulishile nakuvahana nawa lisesa lyakuhana vishinganyeka vyavo havyuma vayatela kusonekewa mumukanda uno. Shikaho ngunahane kusakwilila chami kuli vathu vose, namauka akulisezaseza ahanyine chinyingi chavovo hamwe kaha lukafwa chamali chinahashisa kusoneka naukufwatula mukanda uno wavinangwilo. Ava vanapu milongeshi, vakhuluwa vahajizemba, mauka akulihandununa hamwe kaha navambwembwa.

Mukukumisa, ngunasakwilila kulihana chavakakuza vakuchihanda chatala vilongeselo vyakutanga mumashikola cha Directorate of Curriculum Development hakuzata nakumona ngana ngwavo mulimo wacosoneka mukanda wakunangula vakashikola unazachiwa mujila yamwenemwene

Charles Ndakala, (Dr.)  
Director – Curriculum Development  
MINISTRY OF EDUCATION

## VILIMO

KUJIMBULA .....	7
MAZU ALI MUMUKANDA .....	9
CHIHANDE CHIVENE: MAJINA .....	10
<i>CHIHANDE: MAJINA</i> .....	10
CHIHANDE : MASEPA.....	18
<b>MUTWE WACHIHANDE 2:</b> Kwivwilila kumijimbu yayashi.....	22
MUTWE WA CHIHANDE: THANGA .....	28
MUTWE WACHIHANDE 5: MAJINA AVILYO VYAMUJIMBA .....	38
CHIHANDE VINOMA VYAWENYEMBO.....	48
MUTWE WACHIHANDE 1: Majina avizachiso vya wenyembo hakanda.....	49
CHIHANDE TUNYAMA .....	57
MUTWE WA CHIHANDE : KULIMENEKA.....	66
BIBLIOGRAPHY .....	76

## KUJIMBULA

Mukanda uno wavilongeselo vyakunangula valongi vamuuthumbo vanausoneka mangana ukafweko milongeshi mukunangula valongi vinangwilo vya Luvale. Mukalikilamu vanalumuna. Uno mukanda wavinangwilo vanausoneka managana uzachiwe mukwashiwisa kunangula valongi vatete navaputuka kulinangula vilongeselo vya 2023 kalikilamu shimbu kanda kupwenga kulongesa nakusonejeka mikanda ivene vatela kuzachisa mukutanga nakutangisa. Mukutwalililaho, uno mukanda uli nakusolola kufwila nakulihana chafulumende kuhichila kumuthango watala vyamashikola mukuputuka kunangula vyakwalumuka chakutanga kalikilamu ya 2023 nawa inamono ngana ngwayo vyuma vanasoneka mumukanda uno vinatemo mukunangula valongi vyuma navalinangula nakuzata namavoko avo kweseka naseteko yakunangakana chalwola tunahetemo.

Numba tuhu uno mukanda vanaukupwisa nakuzamikisa vyuma vyakunangula valongi, milongeshi vatela kuzachisa chinyingi nauhashi wakutanga chavo nakumona ngana ngwavo vali nakuhakilako vyuma vikwaavo vinahase kuzamikisa kutanga chavalongi chikumanyi haze vanamono ngana ngwavo hali liphwata. Kuhakilako nawa, milongeshi vanahase kwalumuna milimo chipwe vyuma navalinga valongi vili mumukanda uno kweseka nakupwa chashikola nashikola vali nakutangilamo valongi.

Vilongeselo vyosena vili mumukanda uno vanajinyina mukumona ngana ngwavo valongi vali nakulinangula vyuma navalinga namavoko avo anakuzamikisa nawa kujiminyina muvishinganyeka kaha nawa nakumona ngana nge khala chihela chipwe shikola valiho valongi vanahase kulinangula mujila yamwenemwene. Echi kuvwovuwa khana chinemanyinana hakuhana uswa wakutanga nakunganyala chakaliilamu yakukupuka kuli khala longi cjakuzeneka kutala okwo afuma chipwe omu apwa.

Hilufwelelo lwakumona nge mukanda ou navinangwilo vilimo vavimone kulema kupwa vuma navikafwa milongeshi kunangula valongi chinyingi, uhashi nalilimi lyaLuvale navilinga vyamwenemwene mukulinangula chakukupuka.

## **MWAKUZACHISHILA MUKANDA**

Mukanda ou unahane vyuma vize navatangisa muthemu yatete vakashikola vamuuthumbo. Vanaupange mumitwe yavihande kaha mutwe wachihande uli navyuma vyakulihandununa vyakufwana nge kuhanjika na kwivwilila, kutanga chakujimina na kusoneka. Vyuma vili omu mumukanda kavyeshi vilongeseloko oloze vyakuzachisa kusoneka vilongeselo. Hakuwahisa vilongeselo watela kufumisa vihanda vya mutwe wachihande kuvyuma vyakulisezaseza. Chinjikizo, mutwe wachihande waatela kupwa kuhanjika na kwivwilila, mazu, kutanga na kusoneka. Omu nauwahisa mutwe wachihande watela kusakula vyuma vyakunangula namilimo oyo vatela kuzata nauhashi wakunangakana. Shikaho mutwe wachihande naupwa nauhashi wakunangakana vyuma vyavivulu. Ngocho, watela kusakula chuma echi nachimbata lwola lwalunene muchihande chove. Kuhakilako nawa, milimo vanakuhane mumukandavene ou kawatela kuyikumisa muchihande chimweko. Evi vanahase kuvikilikita muvilongeselo vyakulihandununa handununa.

## **MWAKUNANGWILA**

Hakunangula, mutwe wachihande watela kukava ‘‘Gradual Release Model (GRM),’’ kulumbununa nge mulongeshi mwaputuka kulinga mulimo khana, kaha mwaulinga hamwe navalongi, kufumaho valongi valinge ukhawavo. Shikaho Unahase kuzachisa jijila jakulisezaseza kunangula valongi



## MAZU ALI MUMUKANDA

Competence –	Uhashi wakunangakana
General :	Uhashi wakunangakana vyuma
Specific competence:	Uhashi wakunangakana chumuma
Theme:	Chihande Chivene
Topic :	Chihande
Sub Topic :	Mutwe wachihande
Expected Standard:	Seteko yakunangakana
Hook:	Kasangumwiso
Assessment:	vyeseke/esekele
Pre-reading:	Shimbu kanda kutanga
Pre-writing:	Shimbu kanda kusoneka
Overview :	Kwaula
Introduction:	Kujimbula
Communication:	Chivwasano
Critical thinking	Kukushinganyeka chakujimina
Analytical Thinking	kushinganyeka chakupezalisa

## CHIHANDE CHIVENE: MAJINA

**Kwaula:** Ou CHIHANDE nautala hamajina a;

- Muthu ivene
- Masepa
- Vathanga
- Tunyama
- Vyuma vya hakhanda

CHIHANDE vene ou, naulingisa valongi kupwa nachinyingi chamajina avyuma vyakulisezaseza mangana chivakafweko mukwivwilila na kuhanjika, mukutanga na kusoneka kupwa vihanda vyavilemu mulilimi.

### *CHIHANDE: MAJINA*

#### **A. KWIVWILILA NA KUHANJIKA**

##### **MUTWE WACHIHANDE 1: Lijina Iyamuthu ivene**

##### **Kujimbula**

Echi MUTWE WACHIHANDE nachitala havalongi kwitava kumajina avo nge vanavasanyika hakachi kavakwavo. MUTWE WACHIHANDE chino nawa nachitala havalongi kuvuluka majina avo mukwoloka.

- **Uhashi wakunangakanavalongi :**
  - Kulivuluka majina avo vavene.

**Thachikiza ngove valongi vatela kunangakanga nakwitava kumajina avo muchalumingo chimwe.**

- **Vinoma**

Vimbokishi, jingunja, jisonekeso, mikanda, tuthachikijilo twavalongi

### **Milimo yanangwilo**

**a)** Kwitava kumajina avo vavene kuhichila mukwolola mavoko, kwitava ngwavo yami uno, kulamika tuthachikijilo twavo...)

i. **Mulongeshi:**

- ✓ Lweza valongi vetave kumajina avo kuhichila mukwolola mavoko, kwitava ngwavo yami uno, kusakwilila, kulondezeza usocha kufuma hachihela chimwe nakuya hachihela chikwavo nge vanavasanyika.
- ✓ Sanyika majina avalongi kukavangiza ndondelo chipwe chiku.

ii. **Valongi:**

- ✓ Vatwame chipwe vemane mumujingulule, valikungulwile hamwe chipwe mumukana.
- ✓ Nge vanamusanyika, atela kulinga nge omu navamulweza;
  - Kutumbuka
  - Kumbata chuma (ngunja) nakuchihaka mumwe (chimbokishi)
  - Kulamika muvwimbimbi halivaya
  - Kusakwilila.
  - Kwitava nakuhanjika ngwenyi, (yami uno, mwane, nguneza )
- ✓ Valisanyike majina nakulitaviza mwavo mwavo.

**b)** Kulivuluka majina avo vavene ( Lijina lyami yami..., yami..., vanguvuluka ngwavo yami...)

i. **Mulongeshi**

- ✓ Hana chitalilo kuzachisa vihula nakumbulwilo yacho.
  - Lijina lyove yove hiya?... Lijina lyami yami Chilombo.
  - Yove hiya? .....Yami Chilombo.
  - Vakuvuluka ngwavo yovehiya? Vanguvuluka ngwavo Chilombo.
- ✓ Linga ngocho navalongi vamwe. Kaha nawa, zachisa myaso mangana uzamikise kunangakana chavo.
- ✓ Lweza valongi vakuhule vihula kaha yove nawa kumbulula mwakwoloka.

ii. **Valongi:**

vatela kulingamo mwavomwavo jino.

- Vavali-vavali nge omu mwavalweza mulongeshi chipwe vavene navalihwojola nakulikumbulula vihula vyakufwanange;
  - Lijina lyove yove hiya?... Lijina lyami yami Chilombo.
  - Yoveya? ..... Yami Chilombo.
  - Vakuvuluka ngwavo yoveya?..... Vanguvuluka ngwavo Chilombo.
  - ✓ Valivuluke majina mu jijila jakulisezaseza
    - Kulamika tuthachikijilo twamajina avo halivaya...)
- **Seteko yakunangakana**
    - Kwitava kumajina avo mukwoloka.
    - Majina avo vavene vavavuluke mukwoloka.

❖ **Vyeseke vyavalongi:**

- Hakunangula chipwe hanyima yakunangula MUTWE WACHIHANDEchino valongi vatela;
- ✓ Vatwame chipwe vemane mumujingulule, valikungulwile hamwe chipwe mumukana.
- ✓ Kwitava kumajina avo nge vanavasanyika kuzachisa;
  - Kutumbuka
  - Kumbata chuma (ngunja) nakuchihaka mumwe (chimbokisi)
  - Kulamika muvwimbimbi halivaya
  - Kusakwilila.
  - Kwitava nakuhanjika ngwenyi, (yami uno, mwane, nguneza )
- ✓ Valisanyike majina nakulitaviza mwavo mwavo.
- ✓ Kulingamo mwavomwavo jino.
  - Vavalivavali nge omu mwavalweza mulongeshi chipwe vavene navalihwojola nakulikumbulula vihula vyakufwanange;
  - Lijina lyove yove hiya?... Lijina lyami yami Chilombo.
  - Yoveya? .....Yami Chilombo.
  - Vakuvuluka ngwavo yoveya?..... Vanguvuluka ngwavo Chilombo.
- ✓ Valivuluke majina mujijila jakulisezaseza
  - Kulamika tuthachikijilo twamajina avo halivaya...)

**kukhukulula**

Echi MUTWE WACHIHANDE chinatale havalongi kusolola chinyingi chakuuluka majina avo kuhichila mu kwitava kumajina avo mukwoloka.

## B. SHIMBU KANDA KUTANGA

### Kujimbula

Ou mutwe wachihanse khana uli nakutala hachinyingi chavasona kwesekesa nge omu chatela kuchizachisa mukutanga.

- **Uhashi wakunangakana chuma**Valongi vatela:
  - Kuthachikiza mwakukwachila mukanda.
- **Thachikiza ngwove: valongi vatela kunangakana mwakukwachila mukanda mukwoloka muvyalumingo vivali.Vinoma**
  - Mikanda yakulisezaseza; Mikanda yamivwimbimbi, Mikanda yajinambala, Mikanda chipwe mapepa akuhona visonejeka, visalo, ndesiki, vitwamo najimesa, vitwamo vyamakumbu (vyavisuku /vyavihi)
- **Milimo yanangwilo**
  - a) **Kukwata mukanda mukwoloka**
    - i. **Mulongeshi:**
      - ✓ Longesa mikanda yayivulu ize muzachisa navalongi yakufwana nge;
        - Mikanda yamivwimbimbi yatunyama, vathu, vyuma vyamuzuvo na mitondo.
      - ✓ Pangila mikanda kuli valongi.
      - ✓ Haka mangana kuli vino hakukwata mukanda:
        - Mukuchikulula
        - Muuhengelo
        - Mukufulumika
      - ✓ Tala valongi muka vanakwate mukanda mukwoloka.
      - ✓ Hulisa valongi nge vanakwate mikanda mujila yakwoloka tahi chiku kaha mwomwo ika? Nge kavakwachile kanawako kaha valumbunwine.
      - ✓ Mivwimbimbi yatela kupwa yakwimika kechi yakuchikululako.
    - ii. **Valongi:**
      - ✓ Vakwate mukanda wakufwika chipwe wakufukununa oku vanatwame ha chisalo;
        - Mahinji vanatandavala
        - Mahinji vanakoneka kunyima
        - Mahinji analisalika kulutwe.
      - ✓ Vakwate mukanda wakufwika chipwe wakufukununa oku vanatwame ha ndesiki;
        - Hakuhaka minguja

- Muwatela kupwa mahinji
- Muwatela kutwama mukanda ha ndesiki.
- ✓ Vakwate mukanda wakufwika chipwe wakufukununa oku vanatwame ha chitwamo cha likumbu;
  - Hakuhaka minguzo
  - Mwakukwachila mukanda.
- ✓ Vakwate mukanda wakufwika chipwe wakufukununa oku vanemana;
  - Mwakukwachila mukanda.
- ✓ Kumbata mukanda
  - Wakufukununa (nalivoko limwe chipwe avali)
  - Wakufwika (haseteko ya mbunda, haseteko ya thulo)

**THACHIKIZA NGWOVE:**Unazamikisa jijila jakwoloka jakukwachilamo mukanda kuli valongi muvihela vyakulisezaseza.

**b) Kutumbika mukanda mujila yakwoloka**

i. **Mulongeshi:**

Hana chitalilo kuli valongi mwakukwachila mukanda mukwoloka uli;

- ✓ Hamesa chipwe handesiki
- ✓ Hamahinji
- ✓ Mumavoko

ii. **Valongi:**

✓ Vatumbike mukanda mukwoloka kwanuka jijila jamwakukwachila mukanda valinangulanga lyehi.

**c) Kufukununa mukanda mukwoloka lipepa limwe limwe.**

i. **Mulongeshi:**

- ✓ Pangila mikanda kuli valongi.
- ✓ Lweza valongi vafukunune mukanda lipepa limwe limwe swi nakusongo mumeso akuunda.
- ✓ Tala valongi vali nakufukununa mapepa mujijila yakuluwa jakufwana nge;
  - Kufukununa mapepa amavulu halwola lumwe
  - Kufukununa mapepa kuputukila kunyimayamukanda
  - Kufukununa mukanda wosena halwola lumwe
  - Kufwonya mapepa hakufukununa.

Lumbunwina valongi jijila jakwoloka jakufukunwinamo mapepa.

- Kufuma kuchilyo nakutwala kuchimoswe
- Lipepa limwe limwe halwola
- Kufuma kwilu yamumbango yakuchilyo
- Kufuma kwishi yambango yakuchilyo
- Kanda kuzachisa maleji hakufukununa mapepa.

ii. **Valongi:**

- ✓ Vafukunune mapepa mujila yakwoloka.

- ✓ Valumbunune vili mumukanda kuhichila mu;
  - Kukwata mukanda mukwoloka.
  - Kutumbika mukanda mujila yakwoloka.
  - Kufukununa mapepa amukanda mukwoloka.
- **Seteko yakunangakanyinamo**
  - ✓ Kukwata mukanda mukwoloka
  - ✓ Kutumbika mukanda mukwoloka
  - ✓ Kufukununa mapepa amukanda mukwoloka.

❖ **Vyeseke vyavalongi:**

- Hakunangula chipwe hanyima yakunangula echi MUTWE WACHIHANDE valongi vatela ku;
  - ✓ Vakwate mukanda wakufwika chipwe wakufukununa oku vanatwame hachisalo;
    - Mahinji vanatandavala
    - Mahinji vanakoneka kunyima
    - Mahinji analisalika kulutwe.
  - ✓ Vakwate mukanda wakufwika chipwe wakufukununa oku vanatwame handesiki;
    - Hakuhaka minguja
    - Muwatela kupwa mahinji
    - Muwatela kutwama mukanda ha ndesiki.
  - ✓ Vakwate mukanda wakufwika chipwe wakufukununa oku vanatwame ha chitwamo cha likumbu;
    - Hakuhaka minguja
    - Mwakukwachila mukanda.
  - ✓ Vakwate mukanda wakufwika chipwe wakufukununa oku vanemana;
    - Mwakukwachila mukanda.
  - ✓ Kumbata mukanda
    - Wakufukununa (nalivoko limwe chipwe avali).
    - Wakufwika (haseteko ya mbunda, haseteko yathulo.
    - Vatumbike mukanda mukwoloka kwanuka jijila jamwakukwachila mukanda valinangulanga lyehi.
  - ✓ Vafukunune mapepa mujila yakwoloka.
  - ✓ Valumbunune vili mumukanda kuhichila mu;
    - Kukwata mukanda mukwoloka.
    - Kutumbika mukanda mujila yakwoloka.
    - Kufukununa mapepa amukanda mukwoloka.
  - ✓ Kavatela kuzachisa maleji hakufukununa mapepako.

**Kukhukulula**

Echi chihande chinatale ha valongi kusolola chinyingi chaku;

- Kukwata mukanda mukwoloka.
- Kutumbika mukanda mujila yakwoloka.
- Kufukununa mapepa amukanda mukwoloka.

## SHIMBU KANDA KUSONEKA

CHIHANDE: CHALA

MUTWE WACHIHANDE: TWAMISO

- **KUJIMBULA**

Echi MUTWE WACHIHANDE nachitala ha twamiso jakwoloka mangana chikafwekoko valongi mukusone.

- **uhashi wakunangakana-** valongi vatela:

- Kutwama mwakwoloka

- **Thachikiza ngwove: valongi vatela kunangakana twamiso yambwende mu vyalumingo vivali.**

- **Vinoma**

- Ndesiki, mesa, chitwamo.

- **Milimo yanangwilo**

- a) Kulilongesa twamiso yambwende

- i. **Mulongeshi:**

- Lweza valongi vatwame mutwamiso oyo vathachikiza.
- Talishisa nakumona jitwamiso valongi nava twama
- Hana chitalilo nakulumbununa twamiso yambwende  
Lumbununa ngwove.
  - ✓ Vatela voloke
  - ✓ Mavoko apwenga hamesa chipwe handesiki.
  - ✓ Vipundo vilyate hamavu oku vinoloka

- ii. **Valongi:**

- Vatwame mutwamiso oyo vathachikiza.
- Vasolole jitwamiso jakulisezaseza



- vatale twamiso mwavalweza mulongeshi yambwende.
  - ✓ Vatela voloke
  - ✓ Mavoko apwenga hamesa chipwe handesiki.
  - ✓ Vipundo vilyate hamavu oku vinoloka

Vahakeko kutwama cha ndumba nanjamba, chamwaza nechi chachipi.

- **Seteko yakunangakana:**

- Valilongese twamiso ya kwoloka

- ❖ **Vyeseke vyavalongi:**

- Hakunangula chipwe hanyima yakunangula echi MUTWE WACHIHANDE valongi vatela;
- vatwame twamiso ya kwoloka (yandumba neyi yanjamba, yamwaza neyi yayipi.)
  - Vatela voloke
  - Mavoko apwenga hamesa chipwe handesiki.
  - Vipundo vilyate hamavu oku vinoloka

### **Kukhukulula**

Echi chihande chinatale havalongi kusolola chinyingi cha:

- Twamiso yakwoloka (yandumba neyi yanjamba, yamwaza neyi yayipi.)
  - Vatela voloke
  - Mavoko apwenga hamesa chipwe handesiki.
  - Vipundo vilyate hamavu oku vinoloka

## CHIHANDE : MASEPA

chihande chino nachitala ha;

1. kuvuluka majina amasepajavo.

chihande khana naunangula valongi kunangakana nakuvuluka majina amasepajavo vakuvihela vyakulisezaseza vyakufwana nge, kushikola, kwimbo naku chechi.

### **Uhashi wakunangakana vyuma**

valongi vatela:;

- vishinganyeka vyakupezalisa vyuma
  - Kupwa vathu vakunangakana nakulumbununa mivwimbimbi yakulisezaseza.
- **Chivwasano.**
  - Kupwa vathu vakulivwasana navakwavo nakuzachila hamwe.
- **Kujiminyina mu vishinganyeka**
  - Kupwa vathu navazachisa vinoma vyakulisezaseza mujjila jajivulu.

### **❖ Kasangumwiso**

*Achi twame ushinganyeke nge muwana muthu nakolo najivwi kumutwe thoo. Atwama kaha ukhawenyi, atambukaukhawenyi, vyuma vyosena alinga ukhawenyi, Alihanjikisa ukhawenyi. Kaha mushinganyeka ngwove ika?*

# Phundu vene unahase kwamba ngana ngove katwama namasepako

## Mazu amalemu:

- sepa
- shikola
- chechi
- kwimbo
- ulombo
- Majina

## C. Kwivwilila na kuhanjika

### mutwe wachihande 1: Majina amasepa

#### Kujimbula

- Echi chihandenachitala hakuvuluka majina amasepajavo .

#### Uhashi wakunangakana chuma: Valongi;

- vavulukemajina amasepa javo.

### Thachikiza ngove: valongi vatela kunangakana majina amasepa javomuchalumingo chimwe.

#### • Vinoma vyakuzachisa

- Jisonekeso, mikanda, tuthachikijilo twavalongi.

#### • Milimo yanangwilo

- c) Kuvuluka majina amasepa javo (chitalilo: lijina lyasepa lyami ikhiye ...

#### i. **Mulongeshi :**

Hana chitalilo kuzachisa vihula nakumbulwilo .

- ✓ Sepalyove lijina lyenyi ikhiye hiya?...sepalyami lijina lyenyi ikhiye Mafwo.
- ✓ Sepalyove ikhiye hiya? ... ikhiyeMafwo.
- ✓ Lweza valongi valihule vihula khana venevi vavali vavali.
- Valongi nawa vahulisemulongeshi, kaha yove mulongeshi ukumbululemukwoloka.
- Lumbunwina valongi jijila jikwavo jakukumbulwilamojakufwana nge eji,

- ✓ Kulamika tuthachikijilo twamasepa jawo halivaya
- ✓ Kukwata mukwavo longi kulivoko nakumuvuluka lijina.
- ✓ Kumeneka mukwavo longi halijina lyenyi.

Linga ngocho navalongi vamwe. kahanawa, Zachisa myaso mangana uzamikise kunangakana chavalongi.

ii. **valongi:**

vatela kulingamo mwavomwavo jino.

- Vavalivavali nge omu mwaivalweza mulongeshi chipwe vavene navalihwojola nakulikumbulula vihula vyakufwanange evi;
- Sepalyove lijina lyenyi ikhiye hiya?...sepalyami lijina lyenyi ikhiye Mafwo.
- Sepalyove ikhiye hiya? ... ikhiye mafwo
- Azanga ulombo muka, chihemo muka, kulya muka navyuma vikwavo nawa kwesekesa navavene valongi
- Hiya sepa lyove ;
  - kushikola
  - kwimbo
  - kuchechi
- ✓ Kulamika tuthachikijilo twamasepa jawo halivaya.
- ✓ Kukwata mukwavo longi kulivoko nakumuvulukalijina.Kumeneka mukwavo longi halijina lyenyi.

**THACHIKIZA NGWOVE** :Zamikisa kuhula nakukumbulula mukwoloka, kaha nawa kukumisa mikuku.

• **Seteko yakunangakana:**

- majina amasepa jawo kuwavuluka mukwoloka.

❖ **Vyeseke vyavalongi:**

- valongi vatela ;

- Vavuluk e majina amasepa jawo mukwoloka nge;

- i. Vanavahulisa kuli mulongeshi
- ii. Vanavahulisa kuli mukwavo longi

❖ *vatela kukumbulula mukwoloka vihula vyakufwanange;*

- Sepalyove lijina lyenyi ikhiye hiya?.  
*sepalyami lijina lyenyi ikhiye Mafwo*
- Sepalyove ikhiye hiya? .....ikhiye Mafwo
- Azanga ulombo muka, chihemo muka, kulya muka navyuma vikwavo nawa kwesekesa navavene valongi
- Hiya sepa lyove ku;
  - shikola
  - hembo
  - kuchechi
- ✓ Kulamikatuthachikijilo twamasepa jawo halivaya

Kukwata mukwavo longi kulivoko nakumuvulukalijina. Kumeneka mukwavo longi halijina lyenyi.

### **kukhukulula**

Echi chihande chatalangahavalongi kusolola chinyingi :

- chakvuluka majina avakwavo chipwe masepa javo.kuwanangakana muvihela vyakulisezaseza.

## **D. SHIMBU KANDA KUTANGA**

**Mutwe wa chihande:** kwivwilila nakwivwishisa .

- **Kujimbula**

- ou CHIHANDE una kutala ha kwivwilila na kwivwishisa mijimbu yakulisezaseza mangana chikafweko valongi mukutanga.

### **Uhashi wakunangakana vyuma**

valongi vatela;:

- vishinganyeka vyakupezalisa vyuma
  - Kupwa vathu vakunangakana nakulumbununa mivwimbimbi yakulisezaseza.
- **Chivasano.**
  - Kupwa vatu vakulivwasana navakwavo nakuzachila hamwe.
- **Kujiminyina muvishinganyeka**

Kupwa vathu navazachisa vinoma vyakulisezaseza mujijila jajivulu.

### **KASANGUMWISO**

Achishinganyeke nge muwana muthu wamukulwane nambate chisaji chenye chamijimbu. ana kwivwilila kumijimbu oku alimulizavu lyavathu vanakuneha vyema. kaha kumuhula ngwavo ambulula ovyo unakwivwilila mwavyambulula? *Phimbi, mwomwo ali muvyema.*

### **Mazu amalemu:**

- kutona
- kupulumana
- chisalo
- muvwimbimbi

## MUTWE WACHIHANDE 2: Kwivwilila kumijimbu yayashi.

- **Kujimbula**

Echi chihandenachitala ha kwivwilila ku mijimbu yayashi nakukumbulula vihula kwesekesa namujimbu.

- **Uhashi wakunangakana chuma**–alongi vatela:

- Kwivwilila kumijimbu yayashi nakukumbulula vihula

- **Thachikiza ngwove: valongi vatela kunangakana kwivwilila kumijimbu yayashi yakulisezaseza, nakukumbulula vihula kweseka namijimbunavevwa mukwoloka mu vyalumingo vivali.**

- **Vinoma**

- Mikanda yamivwimbimbi yakulisezaseza, visalo, chati yamivwimbimbi

### **Milimo ya nangwilo**

**d)** Kwivwilila ku mijimbu yayashi

iii. **Mulongeshi:**

Watela kupwa namikanda yakulisezaseza;

- ✓ Ili namivwimbimbi yavathu, tunyama, mitondo navyuma yakulisezaseza.
- ✓ Sakulaho umwe owo mutangila valongi, kaha lweza valongi vashimutwile hamivwimbimbi ili hamukanda khana
- ✓ Hakamangana kuli evi navashimutwila valongi:
  - Hali muthu

- Hali mutondo
- Halikawa, navikwavo
- ✓ Hula valongi vakulweze vyuma vanashinganyeka vili mumukanda.  
Hakako lushimbi ngwove :  
Twivwililenu kumujimbu uli muno mumukanda.  
Tulihulikenu kulu mwomwo nakupwa vihula hanyima chipwe omu natutanganga uno mujimbu.
- ✓ Tangila mujimbu valongi.
- ✓ Mwimikila imikila mangana umone nge vanakwivwilila.
- ✓ Hula vihulula vyakufwana nge;
  - Mwashinganyeka ngwenu vyumamuka navikavaho?
  - Kahamwalinga ngachili?
  - Mutwe muka wachihande vanatuhane?

**iv. Valongi:**

- ✓ Kwivwilila kumujimbu oku vanatwame hachisalo
  - Okuvanatono
  - Oku vanafwiki hameso
  - Oku vana savala chakupulumana
  - Oku vanemana mumujingulule
- ✓ Kukumbulula vihula ;
- Vatela kukumbulula vihula oku;
  - Vanatono
  - vanafwiki hameso
  - vana savala chakupulumana
  - vanemana mumujingulule
- ✓ Mumazavu amandende vatela kulilweza mijimbu yayihi nakulihula vihula.

**THACHIKIZA NGWOVE** watela kuzamikisa jila yakwoloka yakwivwilila kumijimbu;

- kutala kuli uze anakwaula
- kusokolola matwitwi nakwivwilila
- kulihulika
- kukavangiza mujimbu kanawa

**Seteko yakunangakana**

- ✓ kulihulika nakwivwilila mujimbu kanawa.
- ✓ kukavangiza mujimbu nakukumbulula vihula mwakwoloka.

❖ **vyeseke vyalongi:**

- valongi vatela:
  - ✓ Kwivwilila kumijimbu oku vana twame ha chisalo
    - Okuvanatono
    - Oku vanafwiki hameso
    - Oku vana savala chakupulumana
    - Oku vanemana mumujingulule

- ✓ Kukumbulula vihula ;
- Vatela kukumbulula vihula kwesekesa namujimbu vanevu oku;
  - Vanatono
  - vanafwiki kumeso
  - vana savala chakupulumana
  - vanemana mumujingulule

### **kukhukulula**

Echi chihande chatalanga havalongi:

- ✓ kwivwilila kumijimbu yayashi.
- ✓ Kukumbulula vihula kweseka nmujimbu vanevu mukwoloka.

## **SHIMBU KANDA KUSONEKA**

**Mutwe wa chihande:**CHALA

- **Kwaula**

- echi chihande khana uli nakutale havikilikita chipwe vihemo vyakulisezaseza vyakuminwe hakusoneka.

### **Uhashi wakunangakana vyuma**

valongi vatela;:

- vishinganyeka vyakupezalisa vyuma
  - Kupwa vathu vakunangakana nakulumbununa mivwimbimbi yakulisezaseza.
- **Chivwasano.**
  - Kupwa vathu vakulivwasana navakwavo nakuzachila hamwe.
- **Kujiminyina mu vishinganyeka**
- Kupwa vathu navazachisa vinoma vyakulisezaseza mujijila jajivulu.**Kuhonesa ukalu**
  - kuwana jijila mwakuhoneselamo maukalu
  - Kukachila na kuunda

## **KASANGUMWISO**

Nge wapwanga nakutambuka kaha muwana mukweze walunga, navwale kahanawa nakavwanda zululu. Mumumona natwame hamesa namapepa amwaza alinakusoneka. Omu muheta mwakamwihi, mumuwana nakwate sonekeso yenyi naminwe yosena itanu. Kaha mushinganyeka ngwove ika?



**Mazu amalemu:**

- malolwa
- minwe
- vifwiko
- mikoswa
- usanga
- jishepu
- kapu
- lilonga
- ndeho
- sipuni

**MUTWE WACHIHANDE 3:** Kuvwovuwisa minwe

- **Kujimbula :**

Chino chihande nachiya nakutala hamilimo yakuvwovuwisa minwe mangana chivakafweko mu kusoneka.

- **Uhashi wakunangakana chuma-** valongi vatela :

– Kuhema chipwe kulinga milimo yakuvwovuwisa minwe.

- **Tachikiza ngove: valongi vatela kunangakanga milimo chipwe vihemo vyakuvwovuwisa minwe muvyalumingo vivali.**

- **❖ Vinoma**

– unonga, malolwa, manona aviwale, makunde, manona alosa, jisonekeso, usekeseke, meya, makapa, wanda, mikoswa na vifwiko vyakumitumwa.

- **Milimo ya nangwilo**

- **❖ Milimo yakuvwovuwisa minwe. (kuhemesa unonga)**

- **b)**

- **i. Mulongeshi**

kungulula unonga uze navahemesa valongi.

Hana valongi unonga vaumbe chose nocho nava sak a .

Talishisa umone vyuma muka valinakuumba kaha valweze jino vaumbe vyakufwana nge;

- ✓ Jishepu (tilayango, seko, sikweya, lekitango)
- ✓ tunyama (vahembo, vamumusenge)
- ✓ vyuma vyakulisezaseza (kapu, lilonga, ndeho, sipuni)

ii. **valongi**

vatela kuhema naunonga mujijila jajivulu jakufwana nge kuumba;

- ✓ jishepu (tilayango, seko, sikweya, lekitango)
- ✓ tunyama (vahembo, vamumusenge)
- ✓ vyuma vyakulisezaseza (kapu, lilonga, ndeho, sipuni)

❖ **kuhandula vyuma kuzachisa minwe**

i. **Mulongeshi**

Haka valongi mu mazavu amandende chipwe vavali vavali.

Mumazavu avo, lumbika vyumavyavivulu vyakufwana nge;

- malolwa, usanga, makunde, jimbatani navifwiko vyakumitumwa.

Valweze valongi vavihandunune nakuvihaka mumazavu. Atela kupwa mazavu a;

- ✓ vifwiko
- ✓ malolwa
- ✓ mikoswa
- ✓ usanga
- ✓ jimbatani Kuzachisa minwe.

ii. **Valongi**

✓ Mumazavu avo vatela kuhandununa vyumanavahane mulongeshi nakuvihaka mumazavu a;

- ✓ vifwiko
- ✓ malolwa
- ✓ mikoswa
- ✓ usanga
- ✓ jimbatani Kuzachisa minwe

valongi vatela cheka kulava evi vyumanakuvihaka mumakapa nakuvifumisamo chimwechimwe kuzachisa minwe. Likapa lya;

- ✓ vifwiko
- ✓ malolwa
- ✓ mikoswa

- ✓ usanga
- ✓ jimbatani

**THACHIKIZA NGWOVE** :valongi vatela kulinangula vihemo khana mangana minwe yavo ihasekutanduuka shimbu vali nakulilongesela kukwata vinoma vyakusonekesa.

**Seteko yakunangakana**

- kukwata vyumavyakulisezaseza mukwoloka chakuhona kuyayavala.

❖ **Vyeseke vyavalongi:**

- valongi vatela;
- ✓ kuumba;
- jishepu (tilayango, seko,sikweya, lekitango)
- tunyama (vahembo, vamumusenge)
- vyuma vyakulisezaseza (kapu, lilonga, ndeho, sipuni)
- ✓ kuhandununa vyumanavahane mulongeshi nakuvihaka mumazavu a;
- vifwiko
- malolwa
- mikoswa
- usanga
- jimbatani Kuzachisa minwe

valongi vatela cheka kulava evi vinoma nakuvihaka mumakapa nakuvifumisamo cheka chimwechimwe kuzachisa minwe.vyatela kupwa Likapa Iya;

- vifwiko
- malolwa
- mikoswa
- usanga
- jimota ...)

**kukhukulula**

Echi chihande chatalanga ha valongi:

- ✓ Kuumba nakuhandula vyuma vyakulisezaseza mangana chivakafweko kuvwovuwisa minwe.

## MUTWE WA CHIHANDE: THANGA

### **Kwaula**

Ou mutwe wa chihande nautala ha;

#### **2. kuvuluka majina avathanga.**

Mutwe wachihandevene ou naulingisa valongi kunangakana nakuvuluka majina avathanga.

### **Uhashi wakunangakana vyuma**

Valongi vatela;

- **Vishinganyeka vyakupezalisa vyuma**
  - Kupwa watu vakunangakana nakulumbununa mivwimbimbi yakulisezaseza.
- **Chivwasano.**
  - Kupwa watu vakulivwasana nava kwavo nakuzachila hamwe.
- **Kujiminyina mu vishinganyeka**
  - Kupwa watu navazachisa vinoma vyakulisezaseza mujijila jajivulu.

### **Mazu amalemu:**

- Mama

- Tata
- Yaya
- songo yami

- **Kwivwilila na kuhanjika**

**MUTWE WACHIHANDE 3: majina avathanga**

**Kujimbula :**

- Echi chihande nachitala hakuvuluka majina avathanga mukwoloka

**Uhashi wakunangakana chuma :valongi :**

- vavuluke majina avathanga yayindende

**Thachikiza ngwove: valongi vatela kunangakanga majina avathanga yayindende mu chalumingo chimwe.**

- **Vinoma vyakuzachisa**

- Chati yamivwimbimbi, mukanda walongi.

- **Milimo ya nangwilo**

**a). Kutalisa valongi mivwimbimbi**

**MULONGESHI**

- ✓ **Talisa mivwimbimbi valongi kuzachisa chati chipwe mukanda walongi.**
- ✓ **Hula valongi vavuluke vivanamono hamuvwimbimbi**
- ✓ **Vatela kuvuluka mazu akufwana nge;**
  - **Tata**
  - **Mama**
  - **Yaya**

- **Songo yami**

## **VALONGI**

- ✓ Vatale hamivwimbimbi nakuvuluka viliho oku;
  - Vanakuzundula mavoko
  - Vanatwame mu mujingulule
  - Vanemana mu mulongo

## **b) kushimutwila umwe na mukwavo**

### **i. Mulongeshi**

- ✓ **Lweza valongi vapwenga vavali vavali.**
- ✓ **Valweke valilweze vathu vatwama navo kwimbo.**
- ✓ **Vatela valilweze ngwavo ngwatwama na;**
  - **Tata**
  - **Mama**
  - **Yaya**
  - **Songo yami**
- ✓ **Ivwillila valongi omu navashimutwila havathu vatwama navo**

## **VALONGI**

- ✓ Vavali vavali vashimutwile nakulilweza vathu vatwama navo
- ✓ **Valilweze ngwavo ngwatwama na;**
  - **Tata**
  - **Mama**
  - **Yaya**
  - **Songo yami**
- ✓ Umwe umwe alweze vakwavo vivanashimutwila.

### **Seteko yakunangakana**

- ✓ Kuvuluka majina avathanga mukwoloka

### **❖ vyeseke vyalongi:**

– valongi vatela:

- ✓ Vatale hamivwimbimbi nakuvuluka viliho oku;
  - Vanakuzundula mavoko
  - Vanatwame mumujingulule
  - Vanemana mumulongo
- ✓ Vavali vavali vashimutwile nakulilweza vathu vatwama navo
- ✓ **Valilweze ngwavo ngwatwama na;**
  - **Tata**
  - **Mama**
  - **Yaya**
  - **Songo yami**
- ✓ Umwe umwe alweze vakwavo vivanashimutwila.

## **kukhukulula**

Echi chihande chatalanga ha :

- ✓ Kuvuluka majina avathanga vakufwana nge.
  - **Tata**
  - **Mama**
  - **Yaya**
  - **Songo yami**
- ✓ Kushimutwila nakuvuluka vathu vatwama navo.

## - SHIMBU KANDA KUTANGA

### MUTWE WA CHIHANDE: CHINYINGI CHAVASONA

- **Kwaula**
  - ou mutwe wa chihande nautala hachinyingi chavasona kwesekesa nge omu chatela kuchizachisa mukutanga jajivulu.
  - **Kuhonesa ukalu**
    - kuwana jijila mwakuhoneselamo maukalu
    - Kukachila na kuunda

### Mazu amalemu:

- chilyo
- chimoswe
- helu
- mwishi

### MUTWE WACHIHANDE 4: Ndongelo yakutanga.

- **Kujimbula**

Echi chihande nachitala hakuzata milimo nayihana chinyingi valongi kunangakana jindondelo jakutanga.

**Uhashi wakunangakana chuma**– valongi vatela:

- Kulondezeza kutanga kufuma kuchimoswe nakutwala kuchilyo. Kulondezeza kutanga kufuma kwilu nakutwala kwishi.

**Thachikiza ngwove: valongi vatela kunangakana kuzata milimo nayivalingisa kunangakana jindondelo jakutangamukwoloka muchalumingo chimwe. .**

**Vinoma**

- Mikanda yamivwimbimbi, livaya, mukanda walongi, mitumwa

**MILIMO YANANGWILO**

**a) KULONDEZEZA KUTANGA KUFUMA KUCHIMOSWE NAKUTWALA KUCHILYO.**

**i. MULONGESHI**

- ✓ Lweka valongi vemane mumulongo
- ✓ Valweke vachaule kufuma kuchimoswe nakuya chilyo oku vanakwimba mwaso (chimoswe, chilyo) nakutwalililaho likha.
- ✓ Imana kulivaya ufunjike mufunda kufuma kuchimoswe nakuya kuchilyo.  
Linga ngocho  
a. mupeho  
b. hamavu

Lumbika mukole chipwe wanda wausuku mumbango ili kuchimoswe chava longi, umwe umwe ajingunune wanda chipwe mukole oku ali nakutambuka kufuma kuchimoswe nakuya kuchilyo.

**ii. VALONGI**

- ✓ Vemane mumulongo nge omu mulongeshi navalweze.
- ✓ Vachaule kufuma kuchimoswe nakuya kuchilyo oku vanakwimba mwaso wa, (chimoswe, chilyo) nakutwalililaho likha.
- ✓ Vakavangize mifunda mwafunjika mulongeshi ha livaya, mupeho nahamavu kuzachisa meso.
- ✓ Umwe umwe ajingunune wanda chipwe mukole oku vali nakutambuka kufuma kuchimoswe nakuya kuchilyo.

**b) kulondezeza jindondelo jakutanga kufuma kwilu nakuya kwishi.**

**i. Mulongeshi**



- ✓ Imana kulivaya ufunjike mufunda kufuma kwilu nakuya kwishi. Linga ngocho
  - Mupeho
  - hamavu
- ✓ twala valongi haweluka muze mwakuhemena.
- ✓ Valweze vahemene ha silayindi vashikumukenga kufuma helu nakwiza mwishi.
- ✓ Zamikisa ngwove vatela kutalishisa omu vakwavo vali nakusulumuka kufuma helu nakwiza mwishi.

## ii. **VALONGI**

- ✓ Vakavangize mifunda mwafunjika mulongeshi ha livaya,mupeho nahamavu kuzachisa meso kufuma kwilu nakwiza mwishi.
- ✓ vayenga haweluka kuchihela cha kuhemena.
- ✓ vahemene hasilayindi vashikumukenga kufuma helu nakwiza mwishi.
- ✓ vatela kutalishisa omu vakwavo vali nakusulumuka kufuma helu nakwiza mwishi.

### **Seteko yakunangakana**

-Kulondezeza kutanga kufuma kuchimoswe nakutwala kuchilyo mukwoloka.

-Kulondezeza kutanga kufuma kwilu nakutwala kwishi mukwoloka.

### ❖ **vyeseko vyalongi:**

- valongi vatela:
- Vemane mumulongo nge omu mulongeshi navalweze.
- Vachaule kufuma kuchimoswe nakuya chilyo oku vanakwimba mwaso wa, (chimoswe, chilyo) .
- Vakavangize mifunda mwafunjika mulongeshi ha livaya,mupehonahamavu kuzachisa meso.
- Umwe umwe ajingunune wanda chipwe mukole oku anakutambukakufuma kuchimoswe nakuya kuchilyo.

- Vatela nawa ;
  - Vakavangize mifunda mwafunjika mulongeshi halivaya,mupehonahamavu kuzachisa meso kufuma kwilu nakwiza mwishi.
  - vayenga haweluka kuchihela cha kuhemena.
  - vahemene ha silayindi vashikumukenga kufuma helu nakwiza mwishi.
  - kutalishisa omu vakwavo vali nakusulumuka kufuma helu nakwiza mwishi.

### **kukhukulula**

Echi chihande chatalanga havalongi:

- Kulondezeza kutanga kufuma kuchimoswe nakutwala kuchilyo mukwoloka.

- Kulondezeza kutanga kufuma kwilu nakutwala kwishi mukwoloka

### **C. SHIMBU KANDA KUSONEKA**

**Mutwe wa chihande:** Chala

- **Kwaula**
  - echi chihande una kutala hamilimo yakulisezaseza yakuminwe hakusoneka.

#### **Uhashi wakunangakana vyuma**

Valongi;

- **Vishinganyeka vyakupezalisa vyuma**
  - Kupwa watu vakunangakana nakulumbununa miwimbimbi yakulisezaseza.
- **Chivwasano.**
  - Kupwa watu vakulivwasana nava kwavo nakuzachila hamwe.
- **Kujiminyina mu vishinganyeka**
  - Kupwa watu navazachisa vinoma vyakulisezaseza mujijila jajivulu.
- **Kuhonesa ukalu**
  - kuwana jijila mwakuhoneselamo maukalu
  - Kukachila na kuunda

**Mazu amalemu:**

- malolwa
- minwe
- vifwiko

- mikoswa
- usanga
- jishepu
- kapu
- lilonga
- ndeho
- sipuni

### **MUTWE WACHIHANDE 3:** Kuvwovuwisa minwe

- **Kujimbula**

Chino chihande nachiya nakutala hamilimo yakuvwovuwisa minwe mangana chivakafweko mu kusoneka.

- **Uhashi wakunangakana chuma**

valongi :

– Kuzata milimo ya kuvwovuwisa minwe.

- **Thachikiza ngwove: valongi vatela kunangakanga milimo chipwe vihemo vyakuvwovuwisa minwe mu vyalumingo vivali.**

- **❖ Vinoma vya kuzachisa**

– unonga, malolwa, manona avivwale, makunde, manona alosojisonekeso, usekeseke, meya, makapa, wanda, mikoswa na vifwiko vyakumitumwa.

- **Milimo ya nangwilo**

- **❖ a) Milimo ya kuvwovuwisa minwe.(kuhemesa unonga)**

- **i. mulongeshi**

kungulula unonga uze navahemesa valongi.

Hana valongi unonga vaumbe chose nocho navasaka.

Talishisa umone vyuma muka valinakuumba kaha valweze jino vaumbe vyakufwana nge;

- ✓ jishepu (tilayango, seko, sikweya, lekitango)
- ✓ tunyama (vahembo, vamumusenge)
- ✓ vyuma vyakulisezaseza (kapu, lilonga, ndeho, sipuni)

- **iii. valongi**

vatela kuhema naunonga mujijila jajivulu jakufwana nge kuumba;

- ✓ jishepu (tilayango, seko, sikweya, lekitango)
- ✓ tunyama (vahembo, vamumusenge)
- ✓ vyuma vyakulisezaseza (kapu, lilonga, ndeho, sipuni)

## **b) kusakula vyuma kuzachisa minwe**

### **i. Mulongeshi**

Haka valongi mu mazavu amandende chipwe vavali vavali.

Mumazavu avo, lumbika vinoma vyavivulu vyakufwana nge;

- malolwa, usanga, makunde, jimbatani navifwiko vyakumitumwa.

Valweze valongi vavibandunune kuvihaka muma zavu. Atela kupwa mazavu a;

- ✓ vifwiko
- ✓ malolwa
- ✓ mikoswa
- ✓ usanga
- ✓ jimbatani Kuzachisa minwe.

### **ii. Valongi**

- ✓ Mumazavu avo vatela kuhandununa vinoma navahane mulongeshi nakuvihaka mumazavu a;
- ✓ vifwiko
- ✓ malolwa
- ✓ mikoswa
- ✓ usanga
- ✓ jimbatani Kuzachisa minwe

valongi vatela cheka kulava evi vinoma nakuvihaka mumakapa nakuvifumisamo chimwechimwe kuzachisa minwe. Likapa lya;

- ✓ vifwiko
- ✓ malolwa
- ✓ mikoswa
- ✓ usanga
- ✓ jimbatani

**THACHIKIZA NGWOVE** valongi vatela kulinangula vihemo khana mangana minwe yavo yihasekutanduuka shimbu vali nakulilongesela kukwata vinoma vyakusonekesa.

### **Seteko yakunangakana)**

- kukwata vinoma vyakulisezaseza mukwoloka chakuhona kuyayavala.

### **❖ Vyeseke vyavalongi:**

- Valongi vatela kuhandula vyuma nakuvihaka mumazavu akufwana nge a;
- vifwiko
- malolwa
- mikoswa
- usanga
- jimatani Kuzachisa minwe

valongi vatela cheka kulava evi vinoma nakuvihaka mumakapa nakuvifumisamo cheka chimwechimwe kuzachisa minwe.vyatela kupwa Likapa Iya;

- vifwiko
- malolwa
- mikoswa
- usanga
- jimatani ...)

### **kukhukulula**

Echi chihande chatalanga havalongi:

- ✓ Kuzata milimo yakuvwovuwisa minwe kuzachisa vyuma vyakulisezaseza.

### **Mutwe wa chihande: Majina**

#### **Kwaula**

Ou mutwe wa chihande nautala ha;

3. Vilyo vya mujimba wa muthu.

Ou mutwe wa chihande naunangula valongi kuthachikiza vilyo vyamujimba wamuthu.

#### **Uhashi wakunangakana vyuma**

Valongi vatela;

#### **▪ Vishinganyeka vyakupezalisa vyuma**

- Kupwa vathu vakunangakana nakulumbununa mivwimbimbi yakulisezaseza.

#### **▪ Chivwasano.**

- Kupwa vathu vakulivwasana navakwavo nakuzachila hamwe.

## ▪ **Kujiminyina mu vishinganyeka**

- Kupwa vathu navazachisa vinoma vyakulisezaseza mujjila jajivulu.

❖ **Kasangumwiso** *Kachi shinganyeke likumbi limwe munakotoka kushikola nasepa lyove Mujila yakuya kwimbo mwatwama mumbuma waunene. Jino sepa lyove himwakulweza ngwenyi evwile zala kaha asakile muyenga kumumbuma nakuhela jimbama mangana mulyenga. Sepa lyove akandamine kwilu na kuhela jimbama. Kajingili kakandende, kwivwa lizu lyamuthu ngwenyi, mwiji mukawo!! Hahaze vene sepa lyove hikuhosomoka kwilu nakuholokela mumavu lyachi. Aputukile kulila oku alinakulikwata kumatwitwi nakumahinji. Chilyo muka chamujimba wasepa lyove unashinganyeka alikolesele?*

*Kumatwitwi nakumahinji*

### **Mazu amalemu :**

- kusolola
- kuweluka
- vilyo
- mutwe
- livoko
- lihinji
- liso

### **KWIVWILILA NAKUHANJIKA**

## **MUTWE WACHIHANDE 5: MAJINA AVILYO VYAMUJIMBA**

### **Kujimbula:**

**Echi chihande nachitala hakusolola nakuvuluka vilyo vyakuweluka wa mujimba wamuthu vyakufwana nge; livoko, lihinji, mutwe, munwe, liso...)**

## **Uhashi wakunangakana chuma**

### **valongi;**

- kuvuluka majina avilyo vyamujimba wamuthu

### **vinoma vya kuzachisa**

- mikanda yamivwimbimbi
- kandoli
- pazo yavilyo vyamujimba wamuthu
- Mikanda yamivwimbimbi yakulisezaseza

**Thachikiza ngwove:** valongi vatela kunangakana kuvuluka majina avilyo vyamujimba wa muthu mukwoloka muchalumingo chimwe.

### **Milimo yanangwilo:**

#### **a) kutongola majina avilyo vyamujimba wamuthu nakuvinyika.**

##### **i. Mulongeshi:**

- ✓ Imba mwaso navalongi wakuvuluka vilyo vyamujimba wamuthu.(ou mutwe, ndondondondondondondo...)
- ✓ Lweza valongi vatwame hamavu mumujingulule.
- ✓ Mbata kandoli chipwe chati yamuvwimbimbi wamujimba wamuthu usolole kuli valongi
- ✓ Valweze vatongole vilyo vyakufwana nge; mutwe, lihinji, livoko, liso oku;
  - Vana Kungongola tumitondo
  - Vana kusakwila
  - Vana kutumbuka
  - Valina kunengula kumutwe
- ✓ Mona ngwove valongi vanakutongola majina avilyo vyakuwelukawamujimba wamuthu mukwoloka. Lweza valongi vanungejeke pazo yavilyo vyamujimba wamuthu.

##### **ii. Valongi :**

- ✓ Kwimba mwaso hamwe namulongeshi wakuvuluka vilyo vyamujimbawamuthu.(ou mutwe, ndondondondondondondo...)
- ✓ Vatwame hamavu mumujingulule.
- ✓ Vatale hali kandoli chipwe hachati vamone viliho. vatongole vilyo vyakufwana nge; mutwe, lihinji, livoko, liso oku;

- a. Vana Kungongola tumitondo
  - b. Vana kusakwila
  - c. Vana kutumbuka
  - d. Valina kunengula kumutwe
- ✓ Vatongole majina avilyo vyamujimba wamuthu mukwoloka.
  - ✓ vanungejeke pazo yavilyo vyamujimba wamuthu vavali vavali.

### **Seteko yakuzachilamo vyuma :**

- ✓ **Kuvuluka vilyo vya wamujimba mukwoloka**

#### **❖ Vyeseke vyavalongi:**

- valongi vatela;

- ✓ Kwimba mwaso wakuvuluka vilyo vyamujimba wamuthu.(ou mutwe wamyee limbwambwa tengatenga, ou mutwe ndondondondondondondo...)
- vatongole vilyo vyakufwana nge; mutwe, lihinji, livoko, liso oku;
- a. Vana Kungongola tumitondo
  - b. Vana kusakwila
  - c. Vana kutumbuka
  - d. Valina kunengula kumutwe

### **kukukulula**

Echi chihandechinatale ha:

- ✓ Kuvuluka vilyo vya mujimba wa muthu mukwoloka.



## SHIMBU KANDA KUTANGA

### MUTWE WA CHIHANDE: CHINYINGI CHA VASONA

- **Kwaula**
  - ou mutwe wa chihande una kutala ha chinyingi chavasona kwesekesa nge omu chatela kuchizachisa mukutanga

### Uhashi wakunangakana vyuma

valongi;

- **Vishinganyeka vyakuphezalisa vyuma**
  - Kupwa vatu vakunangakana nakulumbununa mivwimbimbi yakulisezaseza.
- **Chivwasano.**
  - Kulivwilila mukuhanjika.
  - Kusolola kunangakana mukwivwilila nakuhanjika
- **Kujiminyina muvishinganyeka**
  - Kupwa vatu navazachisa vinoma vyakulisezaseza mujjila jajivulu.
- **Kuhonesa ukalu**
  - kuwana jijila mwakuhoneselamo maukalu
  - Kukachila na kuunda

### Mazu amalemu:

- Mifunda
- mivwimbimbi
- mahinya
- lipepa

## **MUTWE WACHIHANDE 2: visonejeka.**

- **Kujimbula**

Echi chihande nachitala ha Vikilikita chipwe milimo ize nayinangula valongi visonejeka vyakulisezaseza.

- **Uhashi wakunangakana chuma-** valongi vatela:
  - kumona na kwinyika visonejeka vyakulisezaseza
- **Tachikiza ngwove: valongi vatela kunangakanga visonejeka vyakulisezaseza mu vyalumingo vivali.**

### **Vinoma vya kuzachisa**

Mikanda yamivwimbimbi yakulisezaseza, visalo, chati yamivwimbimbi

- **Milimo yanangwilo.**

a). Kumona nakwinyika visonejeka vyakulisezaseza

- i. **Mulongeshi**

- ✓ Longesa mivwimbimbi yakulisezaseza hajikhati.
- ✓ Talisa valongi mivwimbimbi yakulisezaseza ili hajikhati.
- ✓ Sweka jikhati muvihela vyakulisezaseza mushikola.
- ✓ Hula valongi vatonde muvwimbimbi muvalweza oku vali nakwimba mwaso wakutonda tonda.(tumutondetondee-e mamalelo tumuhane mwoyo)
- ✓ Yatela kupwa mivwimbimbi yakufwana nge;
  - a) Yavathu
  - b) Yavasona chipweyavivumo
  - c) Jinambala

d) Khulusu ...)

✓ Lweza valongi kukavangiza lushimbi luno;

e) Vaseze khati yakuluwa muchihela chayo, yakwolakavayimbate nakuyisolola kuli vakwavo valongi kaha vamusangejeke.

ii. Valongi

✓ Vatale miwimbimbi yakulisezaseza ili hajikhati.

✓ Vatonde miwimbimbi mulongeshi mwavalweza.

✓ Vatela kutonda miwimbimbi yakufwana nge;

f) Yavathu

g) Yavasona chipwevivumo

h) Jinambala

i) Khulusu ...)

Vatela kukavangiza lushimbi luze navalweze mulongeshi. b.

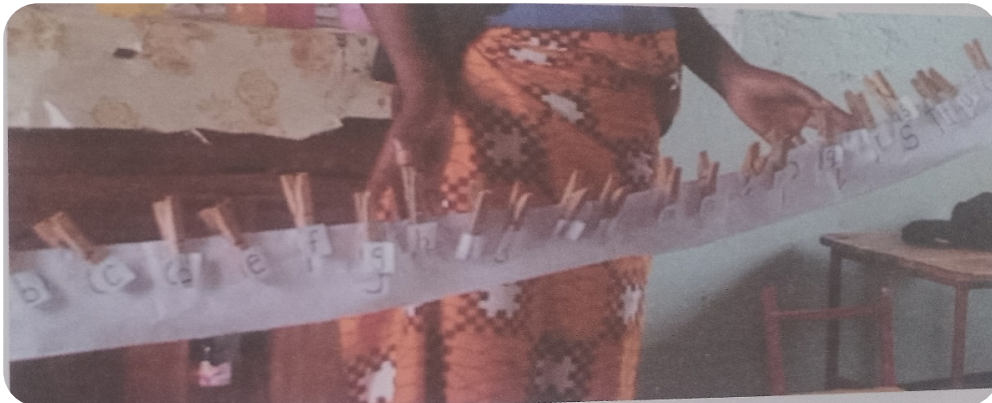
Kupanjika

i. Mulongeshi

✓ Longesa jikhati javasona vavandende navaze vavanene.

✓ Talisa valongi mwakupanjikila vasona

- Hawanda
- Hamavu
- Hachati
- Halivaya



ii. Valongi;

✓ Vapanjike jikhati javasona kutesa nomu navalweze mulongeshi.

- Hawanda
- Hamavu
- Hachati
- Halivaya

**THACHIKIZA NGWOVE**watela kuhakilako vihemo ovyo wathachikiza vinapandama kuli chino **MUTWE WACHIHANDE.**(kupanjika)

**Seteko yakunangakana.**

- ✓ Kumona nakwinyika visonejeka vyakulisezaseza mwakwoloka

❖ **vyeseke vyalongi:**

– valongi vatela:

- ✓ **kutala hamivwimbimbi yakulisezaseza ili hajikhati. kutonda mivwimbimbi ize mulongeshi navalweza.yakufwana nge;**

j) Yavathu

k) Yavasona chipwe yavivumo

l) Jinambala

m) Khulusu ...)

- kupanjika jikhati javasona kutesa nomu navalweze mulongeshi.

- **Hawanda**
- **Hamavu**
- **Hachati**
- **Halivaya**

**kukhukulula**

Echi chihande chatalanga ha valongi:

- ✓ Kumona nakwinyika visonejeka vyakulisezaseza..

## **CHIHANDA C. SHIMBU KANDA KUSONEKA**

**Mutwe wa chihande:** Chala

- **Kwaula**
  - echi chihande khana una kutala havikilikita chipwe vihemo vyakulisezaseza vyakuminwe hakusoneka.

**Uhashi wakunangakana vyuma.** valongi vatela;**vishinganyeka vyakuphezelisa vyuma.**

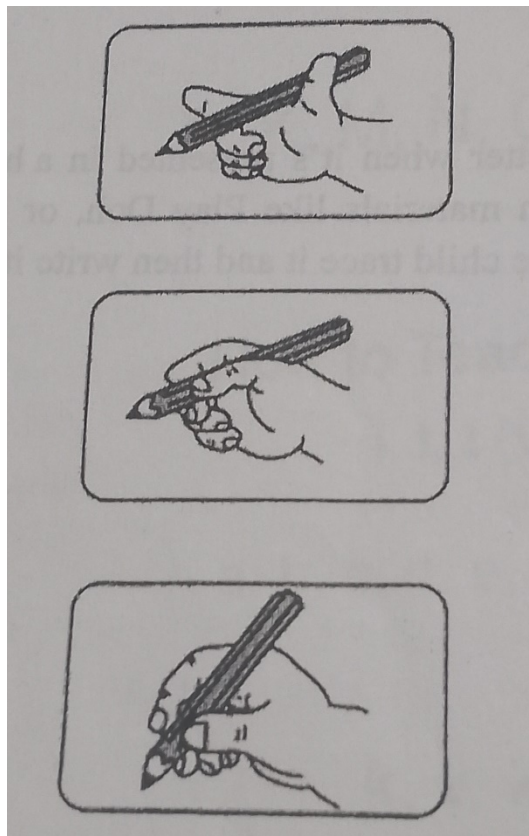
- Kupwa watu vakunangakana nakulumbununa miwimbimbi yakulisezaseza.
- **Chivwasano.**
  - Kupwa watu vakulivwasana navakwavo nakuzachila hamwe.
- **Kujiminyina mu vishinganyeka**
  - Kupwa watu navazachisa vinoma vyakulisezaseza mujjila jajivulu.
- **Kuhonesa ukalu**
  - kuwana jijila mwakuhoneselamo maukalu
  - Kukakachila na kuunda

**Mazu amalemu:**

- sonekeso
- kwata
- ulombo

**MUTWE WACHIHANDE 3:** kukwata sonekeso kanawa.

- **Kujimbula** :Chino chihande nachiya nakutala hamilimo yamwakukwachila sonekeso mangana chivakafweko mu kusoneka.
  - **uhashi wakunangakana chuma**– valongi vatela:
    - Kukwata kanawa vyakusonekesa vyakulisezasesa.
    - ❖ **Thachikiza ngwove: valongi vatela kunangakanga milimo chipwe vihemo vyakuvwovuwisa minwe mu vyalumingo vivaliVinoma vya kuzachisa.**
      - Kilayoni, makala, jisonekeso jamakala,choka, jipeni, tumitondo
      -
  - **Milimo ya nangwilo**
    - c) **Kukwata kanawa vyakusonekesa vyakulisezasesa.**
- iv. **mulongeshi**
- ✓ Imba mwaso navalongi wakulizanga mwakukwachila vyakusonekesa.
  - ✓ Lweza valongi volojole minwe.
  - ✓ Lweza valongi mwakukwachila vyakusonekesa mujindondelo jakulisezaseza jakufwana nge eji jili hamuvwimbimbi;



v. **valongi**

- ✓ vembenga mwaso namulongeshiwakulizanga mwakukwachila vyakusonekesa.
- ✓ Volojole minwe.
- ✓ Valondezeze jindondelo mwavalweza mulongeshi jamwakukwachila vyakusonekesa.

**THACHIKIZA NGWOVE;**valongi vatela kulinangula vihemo khana mangana minwe yavo yihasekutanduuka shimbu vali nakulilongesa kukwata vinoma vyakusonekesa.

**Seteko yakuzachilamo vyuma.**

- kukwata vinoma vyakulisezaseza vyakusonekesa mukwoloka.

❖ **Vyeseke vyavalongi:**

valongi vatela

- ✓ Kwolojola minwe.
- ✓ kulondezeza jindondelo navalweza mulongeshi mwakukwachila vyakusonekesa.

**kukhukulula**

Chino chihande chinatale ha kunangula valongi mwakukwachila vyakusonekesa .

## CHIHANDE VINOMA VYAWENYEMBO

### Kwaula (Introduction)

echi chihande, nautala ha;

#### 4. kuvuluka majina avinoma vyawenyembo.

Mutwe khana vene ou naulingisa valongi kunangakana nakutongola majina avinoma vyawenyembo vyakulisezaseza vyakufwana nge, lilonga, ndeho, sopo, mukumbo, chitwamo, mesa, ngimbu, litemo...)

valongi vatela: **vishinganyeka vyakuphezalisa**

- Kupwa watu vakunangakana nakulumbununa mivwimbimbi yakulisezaseza.
- **Chivwasano.**
  - Kupwa watu vakulivwasana navakwavo nakuzachila hamwe.
- **Kujiminyina muvishinganyeka**
  - Kupwa watu navazachisa vinoma vyakulisezaseza mujijila jajivulu.

**Mazu amalemu:**

- Ndeho
- lupasa
- chiko
- mesa
- malonga
- lukombo
- phoko
- litemochitwam



## KWIVWILILA NAKUHANJIKA

### MUTWE WACHIHANDE 1: Majina avizachiso vya wenyembo hakanda.

#### **Kujimbula:**

- Echi chihande nachitala hakuvuluka majina avinoma vyawenyembo vize vathu veji kuzachisanga hakanda.

#### **Uhashi wakunangakana chuma :valongi;**

- vavulukemajina avinoma vyawenyembo vyakulisezasezavize vathu veji kuzachisanga ha hakanda.

### **Thachikiza ngwove: valongi vatela kunangakanga majina avinoma vyawenyembo mu vyalumingo vivali.**

#### • **Vinoma vyakuzachisa**

Chati, jikati, mukanda walongi navinoma vivene.

#### **Milimo yanangwilo**

**d)** Kuvuluka majina avinoma vyaha khanda.

##### iii. **Mulongeshi :**

- ✓ Tanjika vinoma vyahakhanda hamesa chipwe lamika chati yamivwimbimbi ha mbango.
- ✓ Hula valongi vakulweze vivanakumona ha chati chipwe ha mesa.
- ✓ Vyatela kupwa vinoma chipwe mivwimbimbi yakufwana nge;
  - Vyamutupete twamuzuvo (muchisambwe, mwakushikamina, mwakusavala na mwakulila)
  - Vyakuwahisa nacho hakanda
  - Vyakuzachisa kumande.

##### iv. **Valongi**

- ✓ Vatalishise vinoma ha mesa chipwe hachati yamivwimbimbi nakuvitongola majina avyo.
- ✓ Vatongole vinoma vyakufwana nge;
  - a. Vyamutupetetwamuzuvo (muchisambwe,(lilonga,ndeho..) mwakushikamina,(chitwamo,TV...) mwakusavala(muhela,lipayi...) namwakulila(mesa,chitwamo...)
  - b. Vyakuwahisa nacho hakanda(lukombo,hala...)
  - c. Vyakuzachisa kumande.(ngimbu, litemo...)

**e)** Kushimutwila ha milimo ya vinoma vyahakhanda

#### ▪ **Mulongeshi:**

- ✓ Longesa milimo yize valongi navazata kuzachisa vinoma yakufwana nge;
  - Kukomba
  - Kulondezeza kulima
  - Kulondezeza kuteleka

## ii. Valongi

- ✓ Vazate milimo ino kuzachisa vinoma ;
  - Kukomba
  - Kulondezeza kulima
  - Kulondezeza kuteleka

### • Seteko yakunangakana:

- Kutongola majina avinoma vya ha khanda mukwoloka.
- Kuvuluka milimo ya vinoma mukwoloka

### ❖ Vyeseke vyavalongi:

– valongi vatela;

- ✓ kutalishisavinoma vili hamesa chipwe hachati yamivwimbimbi nakuvitongola majina avyo .
- ✓ kutongolavinoma vyakufwana nge;
  - Vyamutupete twamuzuvo (muchisambwe,(lilonga,ndeho..)  
mwakushikamina,(chitwamo,TV...)  
mwakusavala(muhela,lipayi...)na  
mwakulila(mesa,chitwamo...)
  - Vyakuwahisa nacho hakhanda(lukombo,hala...)
  - Vyakuzachisa kumande.(ngimbu, litemo...)
  - kuzatamilimo ino kuzachisa vinoma. Kukomba
  - Kulondezeza kulima
  - Kulondezeza kuteleka

## kukhukulula

Echi chihande chinatale ha valongi;

- Kuvuluka majina avinoma vya hakhanda.
- Kutongola milimo ya vinomavya hakhanda.

## SHIMBU KANDA KUTANGA

### MUTWE WA CHIHANDE; VIVUMO.

#### Kwaula

- echi chihande una kutala hakwivwilila kuvivumo vya vyuma vyakulisezaseza mangana chikafweko valongi mukutanga.

- **Uhashi wakunangakana vyuma**

Hanyima yakuvanangula ou mutwe wa chihande, valongi vatela kosolola nganyo yakufwana nge;

- **vishinganyeka vyakuphezalisa.**
  - Kupwa watu vakunangakana nakulumbununa mivwimbimbi yakulisezaseza.
- **Chivwasano.**
  - Kulivwilila mukuhanjika.
  - Kusolola kunangakana mukwivwilila nakuhanjika
- **Kujiminyina mu vishinganyeka**
  - Kupwa watu navazachisa vinoma vyakulisezaseza mujijila jajivulu.
- **Kuhonesa ukalu**
  - kuwana jijila mwakuhoneselamo maukalu
  - Kukachila na kuunda

#### Mazu amalemu:

- ✓ Ngoma
- ✓ Chichakachaka
- ✓ Ngita
- ✓ Phala
- ✓ Chivumo
- ✓ Likembe

**MUTWE WACHIHANDE 2:** vivumo vyakufuma kuvyuma vyakuli handununa.

- **Kujimbula**

Echi chihande nachitala ha kwivwilila vivumo vyakufuma kuvyuma vyakuli handununa.

**uhashi wakunangakana chuma:** valongi vatela:

- Kulondezeza vivumo vyakufuma kuvyuma vyakuli handununa.

**Tachikiza ngwove: valongi vatela kunangakanga vivumo vyakufuma kuvyuma vyakuli handununa mu vyalumingo vivali.**

**Vinoma vya kuzachisa.**

Ngoma ,Chichakachaka, Ngita ,Phala ,, Likembe ,chati yamivwimbi yavyuma, mukanda walongi...)

**Milimo ya nangwilo**

- Kulondezeza vivumo vyakufuma kuvyuma vyakuli handununa.

**Mulongeshi:**

- ✓ veta hachuma chize nachivuma(ngezo, ngoma, kapyololo)
- ✓ hula valongi vakulweze vivanevu.
- ✓ Haka vyuma vyavivumo hachisalo chipwe muchihela ocho unawahisa.
- ✓ Lweza valongi vahemese vyumakhana.(ngoma, chichakachaka, phala...)
- ✓ Valweze vavuluke vivumo vanakwivwa.(ndindindi, chakachaka, polilo...)
- ✓ Vahule vihula vyakufwana nge;
  - "ngoma yavumu ngachili?...ndindindi"
  - "nyi ngezo nawa?" ....ngengenge
- ✓ Sweka vyuma muvihela vyakulisezaseza.
- ✓ Hana khati yamuvwimbimbi kuli longihilongi.
- ✓ Valweze vavitonde, nge vanachiwane valondezeze chuvumo chachuma khana.

**Valongi:**

- ✓ Vahemese vyuma vyavivumo hachisalo chipwe muchihela vanavawahishila.
- ✓ valondezeze vivumo vanakwivwa.(ndindindi, chakachaka, polilo...)

- ✓ vakumbulule vihula vyakufwana nge;
  - "ngoma yavumu ngachili?.....ndindindi"
  - "nyi ngezo nawa?" ..ngengenge....)
- ✓ Kuzachisa jikhati jamuvwimbimbi,vatonde vyuma nasweke mulongeshi.kaha omu navaviwana,valondezeze vivumo vyavyuma khana.

### **Seteko yakuzachilamo vyuma.**

- *vivumo vyakufuma kuvyuma vyakulisezaseza kuvilondezeza mukwoloka*

### **❖ vyeseko vyalongi:**

valongi vatela:

- ✓ kuhemesa vyuma vyavivumo hachisalo chipwe muchihela vanavawahishila.
- ✓ kulondezeza vivumo navevwa.(ndindindi, chakachaka, polilo...)
- ✓ kukumbulule vihula vyakufwana nge;
  - "ngoma yavumu ngachili?.....ndindindi"
  - "nyi ngezo nawa?" .....ngengenge....) Ngevana vanavahulukuli mulongeshi chipwe kuli longi mukwavo.
- ✓ Vawane vyuma nasweke mulongeshi kaha omu navaviwana,valondezeze vivumo vyavyuma khana.

### **kukhukulula**

Echi chihande chatalanga ha :

- **Kulondezeza vivumo vyakufuma kuvyuma vyakulisezaseza vili nge;**
- **Ngoma**
- **Phala**
- **Ngita**
- **Kapyololo**
- **Chichakchaka**
- **Ngezo**

## SHIMBU KANDA KUSONEKA

### MUTWE WA CHIHANDE: CHALA

- **Kwaula**

- echi chihande una kutala havikilikita chipwe vihemo vyakulisezaseza vyakuminwe ha kusoneka.

### Uhashi wakunangakana vyuma

valongi vatela;

- **vishinganyeka vyakuphezalisa vyuma.**
  - Kupwa watu vakunangakana nakulumbununa miwimbimbi yakulisezaseza.
- **Chivwasano.**
  - Kupwa watu vakulivwasana navakwavo nakuzachila hamwe.
- **Kujiminyina mu vishinganyeka**
  - Kupwa watu navazachisa vinoma vyakulisezaseza mujijila jajivulu.
- **Kuhonesa ukalu**
  - kuwana jijila mwakuhoneselamo maukalu
  - Kukachila na kuunda

### Mazu amalemu:

- Jipatani
- kufundulula
- malolwa
- mikoswa
- usanga
- manona avivwale
- wanda

### **MUTWE WACHIHANDE 3:** Kusoneka jiphatani

- **Kujimbula :**

Chino nachitala hamilimo yakusoneka jiphatani mangana chikafweko valongi mukusoneka.

- **Uhashi wakunangakana chuma;**valongi vatela:

- Kusoneka jiphatani jajashi.

- **Thachikiza ngwove: valongi vatela kunangakanga milimo chipwe vihemo vyakusoneka jiphatani mu vyalumingo vivali.**

- ❖ **Vinoma vya kuzachisa.**

- unonga, malolwa, manona avivwale, makunde, manona alosojisonekeso, usekeseke, meya, wanda, mikoswa na vifwiko vyakumitumwa.

- **Milimo ya nangwilo.**

- d) Kusoneka jiphatani jajashi.

- vi. **mulongeshi**

- ✓ Lweza valongi volojole minwe oku valinakwimba mwaso wakitambukisa minwe.**(twingo twingo)**

- ✓ Kungejeka vinoma vyakuzachisa hakusoneka jiphatani.

- ✓ Lweza valongi vasoneke jiphatani kuzachisa vinoma vyakulisezaseza.

- ✓ Mona ngwove valongi vanakusoneka jiphatani kuzachisa vinoma vyakulisezaseza;

- Hamavu

- Hamapepa

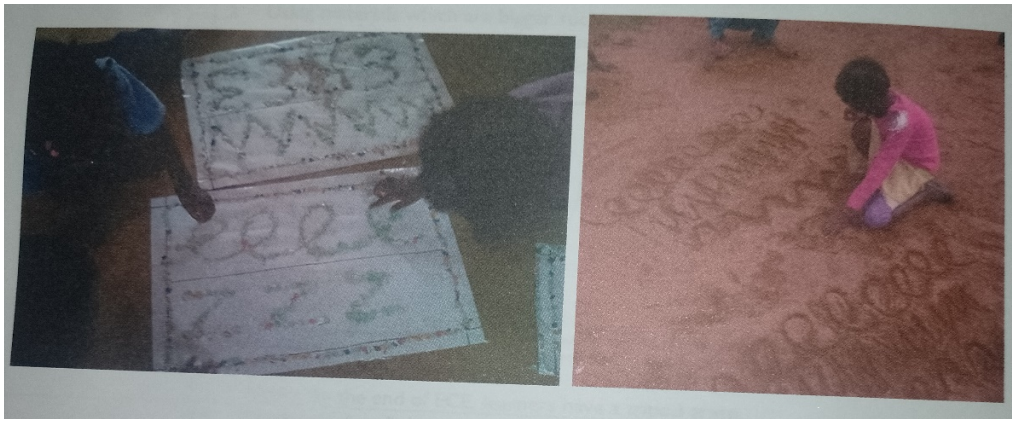
- Hamesa

- Halivaya

- ✓ Talishisa umone jiphatani muka valinakusoneka, kaha valweze vasoneke jiphatani nge jino;

- jishepu (tilayango, seko,sikweya, lekitango)

- mifunda (zikizaki, wamakhanya, wakwoloka, wakulisetwojoka... )



vii. **valongi**

- ✓ Volojole minwe oku valinakwimba mwaso.
- ✓ Vasoneke jiphatani kuzachisa vinoma vyakulisezaseza.
- ✓ Vasoneke jiphatani kuzachisa vinoma vyakulisezaseza;
  - Hamavu
  - Hamapepa
  - Hamesa
  - Halivaya
- ✓ Vasoneke jiphatani jino;
  - jishepu (tilayango, seko, sikweya, lekitango)
  - mifunda (zikizaki, wamakhanya, wakwoloka, wakulisetwojoka... )

**THACHIKIZA NGWOVE**valongi vatela kulinangula vihemo khana mangana minwe yavo yihasekutanduuka shimbu vali nakulilongesela kukwata vinoma vyakusonekesa.

**Seteko yakuzachilamo vyuma.**

- Kusoneka jiphatani jajashi mukwoloka.

❖ **Vyeseko vyavalongi:**

valongi vatela;

- ✓ kusoneke jiphatani kuzachisa vinoma vyakulisezaseza;
  - Hamavu
  - Hamapepa
  - Hamesa
  - Halivaya
- ✓ Vasoneke jiphatani jakufwana nge;
  - jishepu (tilayango, seko, sikweya, lekitango)
  - mifunda (zikizaki, wamakhanya, wakwoloka, wakulisetwojoka... )

**kukhukulula**

echi chihande unatale ha kulinangula kusoneka jiphatani kuzachisa vinoma vyakulisezaseza.



### **Kwaula**

Echi chihande, nautala ha;

Kuvuluka tunyama vakupita .

- Naukafwa valongi kupwa nachinyingi chatunyma vakupita.

### **Uhashi wakunangakana vyuma.**

valongi vatela;

- vishinganyeka vya kuphezalisa vyuma
  - Kupwa watu vakunangakana nakulumbununa mivwimbimbi yakulisezaseza.
- **Chivwasano.**
  - Kupwa watu vakulivwasana nava kwavo nakuzachila hamwe.
- **Kujiminyina mu vishinganyeka**
  - Kupwa watu navazachisa vinoma vyakulisezaseza mujijila jajivulu.

### **Mazu amalemu:**

- Tunyama
- Muchitungilo
- Kupita

## KWIVWILILA NA KUHANJIKA

### **MUTWE WACHIHANDE 1: majina atunyama vakupita**

#### **Kujimbula:**

- Echi chihande nachitala ha kuvuluka majina atunyama vakupita.(Kawa, Ngombe, Kameshi,Phembe na Kasumbi).

#### **Uhashi wakunangakana chuma :valongi vatela;**

- Kuvuluka majina atunyama vakupita.

### **Thachikiza ngove: valongi vatela kunangakanga majina atunyama vakupitamu**

#### **chalumingo chimwe.**

- **Vinoma vyakuzachisa**

- Chati, mikanda yamivwimbimbi ya tunyama, tunyama vakuumba, vifwanyisa vyatunyama.

- **Milimo ya nangwilo**

**f)** Kuvuluka majina atunyama vakupita (kawa, kasumbi, ngombe ...)

v. **Mulongeshi :**

- ✓ Imba mwaso watunyama hamwe navalongi.(tunyama twetu vamwaza)
- ✓ Aula mujimbu chipwe chishimo chatunyama vakupita.
- ✓ Hula valongi vavuluke majina atunyama vanevu mumujimbu khana.
- ✓ Tanjika chati yamivwimbimbi yatunyama chipwe lumbika vifwanyisa vyatunyama hamesa.
- ✓ Lweza valongi vatalishise nakumona mivwimbimbi ili hachati chipwe vifwanyisa vili hamesa.
- ✓ Vehule vavuluke vivanamono hachati chipwe hamesa.
  - Kawa
  - Ngombe
  - Kameshi/pusi
  - Kasumbi
  - Phembe
- ✓ Lweza longi umwe umwe ayenga ambate muvimbimbi chipwe chifwanyisa, achivuluke nakuchisolola kulivakwavo.
- ✓ Lweza valongi vavali vavali valilweze tunyama vatwama navo hamemboavo.

vi. **valongi:**

- ✓ vatela kwimba mwaso watunyama hamwe namulongishi.(tunyama twetu vamwaza)
- ✓ kwivwilila kumujimbu chipwe chishimo chatunyama vakupita.
- ✓ kuvuluka majina atunyama vanevu mumujimbu khana.
- ✓ vatalishise nakumona miwimbimbi ili hachati chipwe vifwanyisa vili hamesa.
- ✓ vavuluke vivanamono hachati chipwe hamesa.
  - Kawa
  - Ngombe
  - Kameshi/pusi
  - Kasumbi
  - Phembe
- ✓ Umwe umwe vayenga vambate muvwimbimbi chipwe vifwanyisa vachivuluke nakuchisolola kulivakwavo.
- ✓ Vavali vavali valilweze tunyama vatwama navo hamembo avo.

**THACHIKIZA NGWOVE.**Zamikisa valongi ngwove vatela kuhula nakukumbulula mukwoloka kaha nawa vatela kukumisa mikuku....

• **Seteko yakuzachilamovyuma.**

- Majina atunyama kuwavuluka mukwoloka.

❖ **Vyeseke vyavalongi:**

- valongi vatela ;

- ✓ kuvuluka majina atunyama vakupita.
  - Kawa
  - Ngombe
  - Kameshi/pusi
  - Kasumbi
  - Phembe
- ✓ vavali vavali valilweze tunyama vatwama navo hamembo avo.
- ✓ umwe umwe vayenga vambate muvwimbimbi chipwe vifwanyisa vachivuluke nakuchisolola kulivakwavo.

**kukhukulula**

Echi chihande chinatale ha;

kuvuluka majina atunyama vakupita

## SHIMBU KANDA KUTANGA .

### MUTWE WA CHIHANDE: VIVUMO

- **Kwaula**

- ou mutwe wa chihande khana una kutala havivumo vechi kuvumisanga tunyama vakupita.

#### **Uhashi wakunangakana vyuma:**valongi vatela;

- **vishinganyeka vyakuphezalisa vyuma.**

- Kupwa vatu vakunangakana nakulumbununa mivwimbimbi yakulisezaseza.

- **Chivwasano.**

- Kulivwilila mukuhanjika.
- Kusolola kunangakana mukwivwilila nakuhanjika

- **Kujiminyina mu vishinganyeka**

- Kupwa vatu navazachisa vinoma vyakulisezaseza mujijila jajivulu.

- **Kuhonesa ukalu**

- kuwana jijila mwakuhoneselamo maukalu
- Kukachila na kuunda

#### **Mazu amalemu:**

- Tunyama
- chitungilo
- Kupita
- Chivumo

## MUTWE WACHIHANDE 2: vivumo vya tunyama vakupita.

- **Kujimbula**

- Echi chihande nachitala ha vivumo vechi kuvumisanga tunyama vakupita.

### Uhashi wakunangakana chuma.valongi vatela:

- kolondezeza vivumo vechi kuvumisanga tunyama vakupita
- **Tachikiza ngwove: valongi vatela kunangakanga** vivumo vechi kuvumisanga tunyama vakupita **mukwoloka mu chalumingo chimwe.Vinoma vya kuzachisa kutangisa na kutanga**
  - Chati, mikanda yamivwimbimbi ya tunyama, tunyama vakuuma, vifwanyisa vyatunyama.

### Milimo yanangwilo

- v. kolondezeza vivumo vechi kuvumisanga tunyama vakupita(moo, mee, kokolikoo...)

#### Mulongeshi:

- ✓ hema chihemo cha sayimoni ngwenyi
  - atetele uphembe... meeee
  - atetele ungombe...mooo
  - atetele usumbi.....kokoliko...)
- ✓ lweza valongi vavumise vivumo vyatunyama vakupita vivanevu muufuku unachi oku;
  - vanasavala
  - vanalalavika
  - vanemana
  - vanatwame hachisalo
    - Naufuku ngwevwanga chivumo meee, moo, kokolikoo....) umwe umwe.
- ✓ Hana mivwimbimbi chipwe vifwanyisa vyatunyama vakupita kumazavu amandende avalongi.
- ✓ Lweza mazavu ngwove, thwamina walizavu atela kumbata khati chipwe chifwanyisa chimwe nakuchisolola, kaha vakwavo valondezeze chivumo chauze kanyama.

**vi. Valongi:**

- ✓ kuhema chihemo cha sayimoni ngwenyi.
  - atetele uphembe... meeee
  - atetele ungombe.....mooo
  - atetele usumbi....kokoliko...)
- ✓ vavumise vivumo vyatunyama vakupita vivanevu muufuku unachi oku;
  - vanasavala
  - vanalalavika
  - vanemana
  - vanatwame hachisalo
- ✓ Naufuku ngwevwanga chivumo meee, moo, kokolikoo....) umwe umwe.
- ✓ Thwamina walizavu atela kumbata khati chipwe chifwanyisa chimwe nakuchisolola, kaha vakwavo valondezeze chivumo chauze kanyama.

**Seteko yakuzachilamo vyuma.**

- ✓ Vivumo vyatunyama vakupita kuvilondezeza mwakwoloka.

❖ **vyeseke vyalongi:**

valongi vatela:

- ✓ kuhema chihemo cha simon ngwenyi
  - atetele uphembe..... meeee
  - atetele ungombe.....mooo
  - atetele usumbi.....kokoliko...)
- ✓ vatwame mumujingulule ha chisalo.
- ✓ vasavale chakupulumana kaha vavumise vivumo vyatunyama vakupita vivanevu muufuku unachi.
  - Naufuku ngwevwanga chivumo meee....) umwe umwe.
- ✓ Thwamina walizavu atela kumbata khati chipwe chifwanyisa chimwe nakuchisolola, kaha vakwavo valondezeze chivumo chauze kanyama.

**kukhukulula**

Echi chihande chatalanga ha:

- kulondezeza vivumo vyatunyama vakupita.

## SHIMBU KANDA KUSONEKA.

### MUTWE WACHIHANDE:CHALA

- **Kwaula**

- ou CHIHANDE,nau tala hamilimo yakufundulula nakununga mifunda mangana chikafweko valongi mukusoneka.

### Uhashi wakunangakana vyuma:

valongi vatela;**vishinganyeka vyakuphezalisa vyuma**

- Kupwa watu wakunangakana nakulumbununa miwimbimbi yakulisezaseza.
- **Chivwasano.**
  - Kupwa watu vakulivwasana nava kwavo nakuzachila hamwe.
- **Kujiminyina mu vishinganyeka**
  - Kupwa watu navazachisa vinoma yakulisezaseza mujijila jajivulu.
- **Kuhonesa ukalu**
  - kuwana jijila mwakuhoneselamo maukalu
  - Kukachila na kuunda

### Mazu amalemu:

- Mufunda
- Ndoti
- Makhanya
- Kwoloka
- kunyotoloka

### **MUTWE WACHIHANDE 3** kufundulula.

- **Kujimbula:**

Chino chihande nachiya nakutala hamilimo yakufundulula mifunda yakulisezaseza mangana chikafweko valongi mukusoneka.

- **uhashi wakunangakana chuma:**valongi vatela;
  - kufundulula mifunda

### **Thachikiza ngwove: valongi vatela kunangakanga** kufundulula naku nunga mifunda **muchalumingo chimwe.Vinoma vya kuzachisa**

- malolwa, manona avivwale, makunde, jisonekeso, usekeseke, meya, mitumwa, wanda na vifwiko vyakumitumwa.

- **Milimo ya nangwilo**

viii. kufundulula mifunda

**mulongeshi;**

- hema vihemo vyakuvwovuwisa minwe navalongi.
    - Twingo twingo
    - Katambuka chakauvi
    - Kwalojola minwe.
  - Hema cheka vihemo vyakufwendengeza.Funjika mifunda hamavu.
    - Wakwoloka.
    - Wamakhanya
    - Wazikizaki
  - Tambuka hamufunda himufunda kaha lweza valongi nawa valingemo.
  - Fundulula mifunda kuzachisa vinoma.
    - Wanda
    - Malolwa
    - Usekeseke
    - Vifwiko vyamitumwa.
- ✓ Lweza valongi vafundulule mifunda kuzachisa vinoma vavali vavali.

ix. **valongi**

- vaheme vihemo vyakuvwovuwisa minwe Twingo twingo
- Katambuka chakauvi



- Kwalojola minwe.
- vaheme vihemo vyaku fwendengeza .
- Vatambuke hamufunda.
  - Wakwoloka.
  - Wamakhanya
  - Wazikizaki
- vafundulule mifunda kuzachisa vinoma vavali vavali.
  - Wanda
  - Malolwa
  - Usekeseke
  - Vifwiko vyamitumwa.

**THACHIKIZA NGWOVE**valongi vatela kulinangula vihemo khana mangana minwe yavo yihase kuvwovuwashimbu vali nakulilongesa kukwata vinoma vyakusonekesa.

**Seteko yakuzachilamo vyuma**

- Mifunda Kuyifundulula mwakwoloka

❖ **Vyeseke vyavalongi:**

- valongi vatela;

- kuhema vihemo vyakuvwovuwisa minwe.
- kuhema vihemo vyaku fwendengeza kutambuka hamifunda.
- kufundulula mifunda kuzachisa vinoma vavali vavali.
  - .

- **kukhukulula**

Echi chihande chatalanga ha:

milimo ya kufundulula nakununga mifunda.

## MUTWE WA CHIHANDE : KULIMENEKA.

### **Kwaula**

chihande, nautala ha;

1. kulimeneka hajilwola jakulisezaseza.

CHIHANDE vene ou naunangula valongi kunangakana nakuvuluka jijila jakulimenekelamo hajilwola jakulisezaseza;

- Chimene mwane
- Musana mwane
- Chingoloshi mwane
- Ufuku mwane

### **Uhashi wakunangakana vyuma.**

valongi vatela; **vishinganyeka vyakuphezelesa vyuma.**

- Kupwa watu vakunangakana nakulumbununa mivwimbimbi yakulisezaseza.
- **Chivwasano.**
  - Kupwa watu vakulivwasana nava kwavo nakuzachila hamwe.
- **Kujiminyina mu vishinganyeka**
  - Kupwa watu navazachisa vinoma vyakulisezaseza mujijila jajivulu.

### **Mazu amalemu:**

- kulimeneka
- lwola
- likumbi
- kalemesa

## KWIVWILILA NA KUHANJIKA

### MUTWE WACHIHANDE 1: kulimeneka chawenyembo

#### Kujimbula:

- Echi chihande nachitala hakuvuluka jijila jakulimenekelamo hajilwola jakulisezaseza mukwoloka.

#### uhashi wakunangakana chuma:valongi vatela;

- Kuzachisa kulimeneka chawenyembo hajilwola jakulisezaseza.

#### Tachikiza ngove: valongi vatela kunangakanga jijila jakulimenekelamo hjilwola jakulisezaseza mu chalumingo chimwe.Vinoma vyakuzachisa

- Chati yamivwimbimbi, mukanda walongi, jikhati jamivwimbimbi yakulisezaseza.

### milimo ya nangwilo:

a) Kulilongesa kumeneka hajilwola jakulisezaseza halikumbi.

#### i. MULONGESHI:

- ✓ Imba mwaso na valongi wa hakulimeneka.
- ✓ Tanjika jikhati jamivwimbimbi yajilola jakulisezaseza.
- ✓ Lweza valongi vakulweze vivanakumona hajikhati.
- ✓ Hula longi hiloni ambate khati nakulumbununa menekeso yalwola luli hakhati.
- ✓ Valongi vavuluke mazu akufwana nge;
  - Chimene mwane – kuchimene
  - Musana mwane – kumusana
  - Chingoloshi mwane – kuchingoloshi
  - Ufuku mwane – kuufuku
- ✓ Talisa chati yamivwimbimbi yavathu vali nakulimeneka hajilwola jakulisezaseza kuli valongi.
- ✓ Lweza valongi vapanjike jikhati jamivwimbimbi ya lwola hachati yakulimeneka.
- ✓ Haka valongi vavali vavali mangana valilongese mwakulimenekela halikumbi.

#### ii. VALONGI:

- ✓ Vembenga mwaso namulongeshi wahakulimeneka.
- ✓ Valweze mulongeshi vivanakumona ha jikhati.

- ✓ Vambate jikhati nakulumbununa menekeso yalwola luli hajikhati.
- ✓ Vavuluke mazu akufwana nge;
  - Chimene mwane – kuchimene
  - Musana mwane – kumusana
  - Chingoloshi mwane – kuchingoloshi
  - Ufuku mwane – kuufuku
- ✓ Vapanjike jikhati jamivwimbimbi yalwola ha chati yakulimeneka.
- ✓ Vavali vavali valilongese mwakulimenekela halikumbi.

**Seteko yakuzachilamo vyuma:**

- Kulimeneka chahajilwola jakulisezaseza mukwoloka.

❖ **Vyeseke vyavalongi:**  
valongi vatela;

- ✓ Kwimba mwaso namulongeshi wahakulimeneka.
- ✓ kulwezamulongeshi vivanakumona hajikhati.
- ✓ kumbatajikhati nakulumbununa menekeso yalwola luliho..
  - Chimene
  - Musana
  - Chingoloshi
  - Ufuku
- ✓ kupanjikajikhati jamivwimbimbi ya lwola hachati..

**kukhukulula**

Echi chihande chinatale ha valongi kusolola chinyingicha ;

kulimeneka hajilwola jakulisezaseza.

## SHIMBU KANDA KUTANGA

**CHIHANDE:** kwivwilila nakwivwishisa.

### **Kwaula**

ou mutwe wachihande nautala ha kwivwilila nakwivwishisa mijimbu yakulisezaseza.

### **Uhashi wakunangakana vyuma**

valongi vatela;

- **Vishinganyeka vyakuphezalisa vyuma.**
  - Kupwa watu vakunangakana nakulumbununa mivwimbimbi yakulisezaseza.
- **Chivwasano.**
  - Kulivwilila mukuhanjika.
  - Kusolola kunangakana mukwivwilila nakuhanjika
- **Kujiminyina mu vishinganyeka**
  - Kupwa watu navazachisa vinoma vyakulisezaseza mujijila jajivulu.
- **Kuhonesa ukalu**
  - kuwana jijila jamwakuhoneselamo maukalu
  - Kukachila na kuunda

### **Mazu amalemu:**

- kutona
- kupulumana
- chisalo
- muvwimbimbi

## **MUTWE WACHIHANDE 1: Mijimbu yayashi.**

- **Kujimbula**

Echi chihande nachitala hakwivwilila kumijimbu yayashi nakukumbulula vihula kweseka namujimbu.

- **uhashi wakunangakana chuma-** valongi vatela:

- Kwivwilila kumujimbu wawashi.
- Kwambulula mijimbu yayashi

**Thachikiza ngwove: valongi vatela kunangakana kwivwilila kumijimbu yayashi nakukumbulula vihula kweseka namijimbu mukwoloka mu vyalumingo vivali.**

### **Vinoma vya kuzachisa**

Mikanda yamivwimbimbi yakulisezaseza, visalo, chati ya mivwimbimbi, mukanda walongi

### **Milimo yanangwilo:**

#### **a) Kutanga mujimbu mukwoloka.**

##### **vii. Mulongeshi:**

Watela kupwa namikanda yakulisezaseza;

- ✓ Ili namivwimbimbi yavathu, tunyama, mitondo navyuma yakulisezaseza.
- ✓ Sakulaho umwe owo mutangila valongi, kaha lweza valongi vashimutwile ha mivwimbimbi ili ha mukanda
- ✓ Hakamangana kuli evi navashimutwila valongi:
  - Hali muthu
  - Hali mutondo
  - Halikawa navikwavo
- ✓ Hula valongi vakulweze vyuma vanashinganyeka vili mu mukanda.

Hakako lushimbi jino:

Twivwililenu jino mujimbu uli muno mumukanda. Tulihulikenu kulu mwomwo nakupwa vihula hanyima chipwe omu natutanganga uno mujimbu.

- ✓ Tanga mujimbu
- ✓ Mwimikila imikila mangana umone nge vanakwivwilila
- ✓ Hula vihulula vyakufwana nge;
  - Mwashinganyeka ngwenu vyumamuka navikavaho?

- Kahamwalinga ngachili?
- Mutwe muka wachihande?

**ii. Valongi:**

- ✓ vevwilila mujimbuoku vanatwame hachisalo
- Oku vanafwiki hameso
- Oku vana savala chakupulumana
- Oku vanemana mumujingulule
- ✓ Kukumbulula vihula;
- Vatela kukumbulula vihula oku;
  - vanafwiki hameso
  - vana savala chakupulumana
  - vanemana mumujingulule
- ✓ Mumazavu amandende vatela kulilweza mijimbu yayihi nakulihula vihula.

**b) Kwambulula cheka mujimbu.**

**i. MULONGESHI:**

- ✓ Haka valongi mumazavu.
- ✓ Tangila valongi mujimbu wawashi.
- ✓ Haka valongi mumazavu vambulule mujimbu unavatangila.
- ✓ Hula valongi vihula ha mujimbu unavatangila.
- ✓ Hula longi hi longi ambulule vyuma vanatange chipwe vanevu mumujimbu

**ii. VALONGI:**

- ✓ Vazachile hamwe mumazavu avo.
- ✓ Vevwilile ku mujimbu mwavatangila mulongeshi.
- ✓ Vambulule mujimbu vanavatangila kuli mulongeshi.
- ✓ Vakumbululevihula hamujimbu vanavatangila kuli mulongeshi.

**THACHIKIZA NGWOVE:** watela kuzamikisa jila yakwoloka yakwivwilila kumijimbu;

- kutala kuli uze anakwaula
- kusokolola matwitwi nakwivwilila
- kulihulika
- kukavangiza mujimbu kanawa

**Seteko yakuzachilamo vyuma**

- ✓ kulihulika nakwivwilila mujimbu kanawa.
- ✓ kwambulula mujimbu mukwoloka.
- ✓ kukavangiza mujimbu nakukumbulula vihula mukwoloka.

- ❖ **vyeseke vyalongi:**
  - valongi vatela:
    - ✓ Kwivwilila kumijimbu oku vana twame hachisalo
      - Oku vanafwiki hameso
      - Oku vana savala chakupulumana
      - Oku vanemana mumujingulule
    - ✓ Kukumbulula vihula ;
  - Vatela kukumbulula vihula kwesekesa namujimbu vanevu oku;
    - vanafwiki kumeso
    - vana savala chakupulumana
    - vanemana mumujingulule

### **kukhukulula**

Echi chihande chatalanga ha valongi:

- ✓ kwivwilila kumijimbu yayashi.
- ✓ Kwambulula mijimbu mukwoloka.
- ✓ Kukumbulula vihula kweseka na mujimbu vanevu mukwoloka.



## SHIMBU KANDA KUSONEKA

### MUTWE WA CHIHANDE: CHALA

- **Kwaula**

Echi chihande nautalahamilimochipwe vihemo vyakulisezaseza vyakuminwe hakusoneka.

### Uhashi wakunangakana vyuma

valongi vatela;

- **vishinganyeka vyakuphezalisa vyuma.**
  - Kupwa watu vakunangakana nakulumbununa miwimbimbi yakulisezaseza.
- **Chivwasano.**
  - Kupwa watu vakulivwasana nava kwavo nakuzachila hamwe.
- **Kujiminyina mu vishinganyeka**
  - Kupwa watu navazachisa vinoma vyakulisezaseza mujijila jajivulu.
- **Kuhonesa ukalu**
  - kuwana jijila mwakuhoneselamo maukalu
  - Kukachila na kuunda

### Mazu amalemu:

- kilayoni
- ulombo
- lipepa
- mukanda
- kusoneka
- jishepu
- kutenga

### **MUTWE WACHIHANDE 3: Kukwita ulombo**

#### **Kujimbula**

Chino chihande nachiya nakutala hamilimo yakukwita ulombo mangana chikafweko valongi kunangakana kusoneka.

#### **uhashi wakunangakana chuma-** valongi vatela:

- Kukwita ulombo hajishepu na havyakutenga

#### **Thachikiza ngwove: valongi vatela kunangakanga kukwita ulombo muvalumingo vivali.**

##### **❖ Vinoma vyakuzachisa**

kilayoni, mukanda walongi, jishepu, jikhati  
jamivwimbimbi, ulombo, mapepa, jichoka

#### **Milimo yanangwilo:**

a) Kushila ulombo ha jishepu.

##### **i. Mulongeshi:**

- ✓ Lweza valongi volojole minwe.
- ✓ Lweza valongi mwakukwachila vinoma vyakukwachisa ulombo.
- ✓ Hana valongi vinoma vyakuzachisa mukukwita ulombo.
- ✓ Lweza valongi vakwite ulombo ha jishepu.
- ✓ Mona ngwove valongi vali nakukwita ulombo ha jishepu mwakwoloka

##### **ii. Valongi:**

- ✓ Volojole minwe.
- ✓ Valinangule mwakukwachila vinoma vyakukwachisa ulombo.
- ✓ Vakwite ulombo ha jishepu mukwoloka nge omu vanavalweze kuli mulongeshi.

b) Kukwita ulombo ha vyakutenga.

##### **i. Mulongeshi:**

- ✓ Lweza valongi volojole minwe.
- ✓ Lweza valongi mwakukwachila vinoma vyakukwachisa ulombo.
- ✓ Hana valongi vinoma vyakuzachisa mukukwita ulombo.

- ✓ Lweza valongi vakwite ulombo ha vyakutenga.
- ✓ Mona ngwove valongi vali nakukwita ulombo ha vyakutenga mukwoloka

ii. VALONGI:

- ✓ Volojole minwe.
- ✓ Valinangule mwakukwachila vinoma vyakukwichisa ulombo.
- ✓ Vakwite ulombo ha vya kutenga mukwoloka nge omu vanavalweze kuli mulongeshi.

**Seteko yakuzachilamo vyuma**

- Kukwita ulombo ha jishepu mukwoloka.
- Kukwita ulombo havyakutenga mukwoloka.

❖ **Vyeseke vyavalongi:**

- Hakunangula chipwe hanyima yakunangula ou CHIHANDE unatale ha kukwita ulombo ha jishepu na ha vyakutenga, valongi vatela kuzata milimo vanavahane kuli mulongeshi mukwoloka. Valongi;
- ✓ Valinangule mwakukwachila vinoma vyakukwichisa ulombo.
- ✓ Vakwite ulombo ha jishepu nahavyakutenga mukwoloka nge omu vanavalweze kuli mulongeshi.

**kukhukulula**

Chino chihande chinatale ha kunangula valongi mwakukwichila ulombo hajishepu nahavyakutenga.

## BIBLIOGRAPHY

Ministry of Education (2014). **Language and Literacy**. Teachers Guide 3-4 &5-6. Curriculum Development Centre. Lusaka

Ministry of Education (2021). **Learning Through Play in Early Education**, Curriculum Development Center, Lusaka.

Ministry of Education (2024). **Early Childhood Education Pre-Literacy and Language Levels 3-4 Syllabus**. Curriculum Development Centre, Lusaka.

Ministry of Education Lusaka (1977). **Zambian Languages Approved Orthography**. Zambia Education Publishing House, Lusaka..

UNESCO. (2011). **Enhancing Learning of Children from Diverse Language Backgrounds: Mother Tongue-Based Bilingual or Multilingual Education in the Early Years**. Prepared by Jessica Ball, University of Victoria.